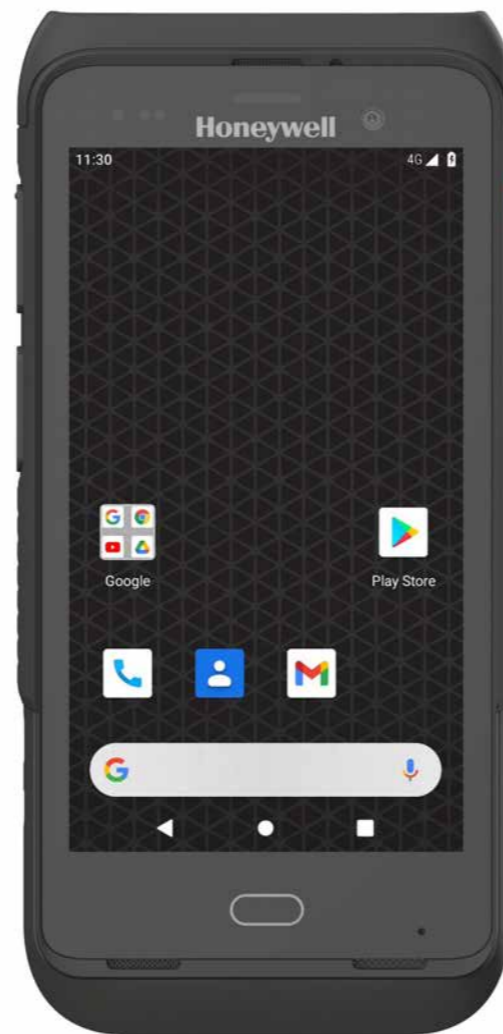


CT45 CT45 XP RUGGED MOBILE COMPUTER

Configuration Guide



SCAN HANDLE



**CT45
CT45 XP**



RFID



VEHICLE DOCK



WEARABLE

THE
FUTURE
IS
WHAT
WE
MAKE IT

Honeywell



TABLE OF CONTENTS

- 1** **TABLE OF CONTENTS**
- 2** **CT45 FEATURE OVERVIEW**
 - S0703 STANDARD RANGE
 - N6803 FLEXRANGE™ NEAR/ FAR RANGE
- 3** **CT45 CONFIGURATION MAP**
 - ANDROID
- 4** **CT45 XP FEATURE OVERVIEW**
 - S0703 STANDARD RANGE
 - N6803 FLEXRANGE™ NEAR/ FAR RANGE
- 5** **CT45 XP CONFIGURATION MAP**
 - ANDROID
- 6** **HONEYWELL EDGE SERVICES**
 - GOLD REPAIR SERVICES - 3 YEAR
 - PLATINUM REPAIR SERVICES - 3 YEAR
 - GOLD REPAIR SERVICES - 5 YEAR
 - PLATINUM REPAIR SERVICES - 5 YEAR
 - CT45 / CT45 XP - REPAIR SERVICES COVERAGE
- 9** **CT45 / CT45 XP SOFTWARE**
 - DEVICE CLIENT PACK
- 10** **CT45 / CT45 XP SCANNING**
 - SCAN HANDLE SIDE BY SIDE COMPARISON
 - OPTION 1 - SCAN HANDLE
 - OPTION 2 - SCAN HANDLE WITH PROTECTIVE BOOT
- 13** **CT45 / CT45 XP DESKTOP COMMUNICATIONS**
 - OPTION 1 – PORTABLE - NON-BOOTED OR BOOTED
 - OPTION 2 – FIXED WITH UNIVERSAL CUP
 - OPTION 3 – USB TYPE C ON-THE-GO (OTG) DESKTOP
 - OPTION 4 – USB TYPE C ON-THE-GO (OTG) VEHICLE
 - OPTION 5 - DISPLAY BASE WITH UNIVERSAL CUP
- 16** **CT45 / CT45 XP VEHICLE INSTALL**
 - OPTION 1 – PORTABLE/ SUB CONTRACTOR INSTALL
 - OPTION 2 – PORTABLE/ SUB CONTRACTOR INSTALL
 - OPTION 3 - FIXED VEHICLE INSTALL WITH DIRECT CONNECTION TO VEHICLE BATTERY
 - OPTION 4 - FIXED VEHICLE INSTALL WITH DIRECT CONNECTION TO VEHICLE BATTERY - EXTERNAL SPEAKER
 - OPTION 5 - FIXED VEHICLE INSTALL WITH DIRECT CONNECTION TO VEHICLE BATTERY/ FUSE BLOCK
 - OPTION 6 - FIXED VEHICLE INSTALL WITH DIRECT CONNECTION TO VEHICLE BATTERY/ FUSE BLOCK - EXTERNAL SPEAKER
 - OPTION 7 - FIXED VEHICLE INSTALL WITH THOR DC/DC CONVERTER
 - OPTION 8 - FIXED VEHICLE INSTALL WITH THOR DC/DC CONVERTER - EXTERNAL SPEAKER
- 23** **CT45 / CT45 XP VEHICLE INSTALL**
 - CT45 VEHICLE DOCK (CT45-VD-CNV) DETAIL VIEW - NON-BOOTED
 - CT45 VEHICLE DOCK (CT45-VD-CNV) DETAIL VIEW - BOOTED
 - CT45 VEHICLE DOCK WITH EXTERNAL SPEAKER (CT45-VD-CNV-SPK) DETAIL VIEW - NON-BOOTED
 - CT45 VEHICLE DOCK WITH EXTERNAL SPEAKER (CT45-VD-CNV-SPK) DETAIL VIEW - BOOTED
- 27** **CT45 / CT45 XP CHARGING AND COMMUNICATION**
 - OPTION 1 - NON-BOOTED QUAD CHARGER WITH UNIVERSAL CUP
 - OPTION 2 - BOOTED QUAD CHARGER WITH UNIVERSAL CUP
 - OPTION 3 - NON-BOOTED 5-BAY CHARGER WITH BATTERY CUP
 - OPTION 4 - BOOTED 5-BAY CHARGER WITH BATTERY CUP
 - OPTION 5 - NON-BOOTED 5-BAY CHARGER WITH UNIVERSAL CUPS
 - OPTION 6 - BOOTED 5-BAY CHARGER WITH UNIVERSAL CUPS
 - OPTION 7 - QUAD BATTERY CHARGER
 - OPTION 8 - 1-BAY QUAD BATTERY CHARGER WITH UNIVERSAL CUP
- 31** **CT45 / CT45 XP CHARGING AND COMMUNICATION**
 - RACK / WALL MOUNT BRACKET
- 32** **CT40 / CT40 XP / CT45 / CT45 XP BATTERY**
 - SPARE BATTERY OPTIONS
- 33** **CT45 / CT45 XP RFID**
 - IH25 RFID READER WITH CT45 / CT45 XP NON-BOOTED
 - IH25 RFID READER WITH CT45 / CT45 XP BOOTED
 - IH25 RFID READER CHARGING OPTIONS
 - IH40 RFID READER WITH CT45 / CT45 XP NON-BOOTED
 - IH40 RFID READER WITH CT45 / CT45 XP BOOTED
 - IH40 RFID READER CHARGING OPTIONS
- 39** **CT45 / CT45 XP PROTECTIVE BOOT**
 - DOCKABLE PROTECTIVE BOOT
- 40** **CT45 / CT45 XP HEADSET**
 - OPTION 1 - 3.5MM CT45 PUSH TO TALK (PTT) HEADSET
 - OPTION 2 - USB-C CT45 PUSH TO TALK (PTT) HEADSET
- 41** **CT45 / CT45 XP WEARABLE**
 - CT45 WITH TETHERED RING SCANNER
- 42** **CT45 / CT45 XP WEARABLE WITH TETHERED RING SCANNER**
 - OPTION 1 - CT40 / CT45 WEARABLE WITH D75E ARM BAND
 - OPTION 2 - CT40 / CT45 WEARABLE - ARM BAND WRIST PAD
- 44** **MISCELLANEOUS**
 - OPTIONAL PARTS
 - MICRO-SD CARDS
 - AC CORDS

CT45 FEATURE OVERVIEW

S0703 Standard Range

N6803 FlexRange™ Near/ Far Range

Gorilla Glass 5 Display	 4G LTE / GPS	 WiFi / BT	S0703 N6803 FlexRange Scanner
-----------------------------------	---	--	---

Included in the box:

- CT45 Mobile Computer
- Battery (318-055-067)
- USB Type C cable
- Hand strap

(Stylus is NOT included, but available to order separately as an accessory)

S0703 Standard Range



No Audio Jack / USB Type C
(WWAN Models CT45-L1N-xxxxxxx)



3.5mm Audio Jack / USB Type C
(WiFi Models Only CT45-LON-xxxxxxx)

CT45 Android - 4G WWAN - S0703 - 4GB RAM/ 64GB Flash

CT45-L1N-27D120G

CT45, WWAN, 4GB/64GB Memory, 5-inch 1280x720P HD, S0703 Standard Range, 13MP Rear Camera/8MP Front Camera, 802.11 a/b/g/n/ac/r/k/mc, Dual SIMs, BT5.1, Android GMS, Battery, IP68&65, Metal battery latch button, USB 3.0 Type C OTG, Push To Talk (PTT)

CT45 Android - WiFi Only - S0703 - 4GB RAM/ 64GB Flash

CT45-LON-27D100G

CT45, WLAN, 4GB/64GB Memory, 5-inch 1280x720P HD, S0703 Standard Range, 13MP Rear Camera/8MP Front Camera, 802.11 a/b/g/n/ac/r/k/mc, BT5.1, Android GMS, Battery, IP68&65, Metal battery latch button, 3.5mm Audio jack, USB 3.0 Type C OTG, Push To Talk (PTT)
(Does not include headset, order CT40-HDST-35MM separately)

CT45 Android - 4G WWAN - N6803 - 4GB RAM/ 64GB Flash

CT45-L1N-28D120G

CT45, WWAN, 4GB/64GB Memory, 5-inch 1280x720P HD, N6803 FlexRange, 13MP Rear Camera/8MP Front Camera, 802.11 a/b/g/n/ac/r/k/mc, Dual SIMs, BT5.1, Android GMS, Battery, IP68&65, Metal battery latch button, USB 3.0 Type C OTG, Push To Talk (PTT)

CT45 Android - WiFi Only - N6803 - 4GB RAM/ 64GB Flash

CT45-LON-28D100G

CT45, WLAN, 4GB/64GB Memory, 5-inch 1280x720P HD, N6803 FlexRange, 13MP Rear Camera/8MP Front Camera, 802.11 a/b/g/n/ac/r/k/mc, BT5.1, Android GMS, Battery, IP68&65, Metal battery latch button, 3.5mm Audio jack, USB 3.0 Type C OTG, Push To Talk (PTT)
(Does not include headset, order CT40-HDST-35MM separately)

Honeywell Repair Services

SVCCT45-SG3N



CT45 / CT45 XP, Edge Service, Gold Maintenance Contract, 3 Year, New Contract

ADD SVCREPLACE-MOB3

AddOn, Edge Service, Device Replacement, Mobility, 3 Year

CT45 CONFIGURATION MAP

Android

		BLUETOOTH/WIFI	WWAN	NFC	MEMORY	IMAGER	CAMERA	OPERATING-SYSTEM	SIM	OPTIONS	DOMAIN	DESCRIPTION	NOTES
CT45-													
L												WiFi 5 802.11 a/b/g/n/ac + Bluetooth 5.1	IEEE 802.11 a/b/g/n/ac/d/e/h/i/k/r/w/mc ; Wi-Fi certified V5.1 Bluetooth and BLE Supported Bluetooth Profiles: HFP, PBAP, A2DP, AVRCP, OPP, SPP, GATT
	0											No WWAN	
	1											LTE (4G) GPS, UMTS/HSPA+ (3G) GSM/GPRS/EDGE	WWAN RADIO (ATT/VZW/SPRINT/TMO/NA/EU) LTE - BANDS 1,2,3,4, 5,7,8,12,13,14,17,19,20,25,26,28,29,30,38,39,40,41,66,71 UMTS/HSPA+ (3G) - BANDS 1, 2, 4, 5, 6, 8, 9, 19 / GSM/GPRS/EDGE QUAD-BAND (850/900/1800/1900 MHZ)
				N								Near Field Communications (NFC)	Integrated NFC reader, compliant with ISO/IEC 14443 A, ISO/IEC 14443 B, ISO/IEC 15693 (ICode), MIFARE 1K / 4K, MIFARE DESFire, Sony FeliCa, ISO/IEC 18092 (Type F)
				--									
					2							4GB RAM, 64GB Flash Memory	Qualcomm QCS4290/ QCM4290 octa-core 2.0GHz
						7						1D/2D Imager (S0703SR) – Standard Range	
						8						1D/2D Imager (N6803FR) – FlexRange™	
							D					13MP Rear Camera / 8MP Front Camera	
								1				Android (GMS)	Google Mobile Services (GMS) certified – Play Store
								2				Android (Non-GMS)	
									0			No SIM slot	
									2			2 x Nano SIM Slots	
										0		Standard	
											C	China (WWAN Only)	China
											G	Global (WWAN or WiFi)	Algeria, Argentina, Australia, Austria, Belarus, Belgium, Bolivia, Brazil, Canada, Chile, Colombia , Costa Rica, Croatia, Czech Republic, Denmark, Dominican Republic, Ecuador, Egypt, Estonia, Finland, France, Germany, Greece, Guatemala, Hong Kong, Hungary, India, Ireland, Israel, Italy, Japan, Lithuania, Malaysia, Mexico, Morocco , Netherlands, New Zealand, Norway, Peru, Philippines, Poland, Portugal, Romania, Russian Fed., Saudi Arabia, Serbia, Singapore, Slovakia, Slovenia, South Africa, South Korea, Spain, Sweden, Switzerland, Taiwan, Thailand, Tunisia, Turkey, UAE, Ukraine, United Kingdom, United States of America



CT45 XP FEATURE OVERVIEW

S0703 Standard Range

N6803 FlexRange™ Near/ Far Range



Included in the box:

- CT45 XP Mobile Computer
- Battery (318-055-067)
- USB Type C cable
- Hand strap

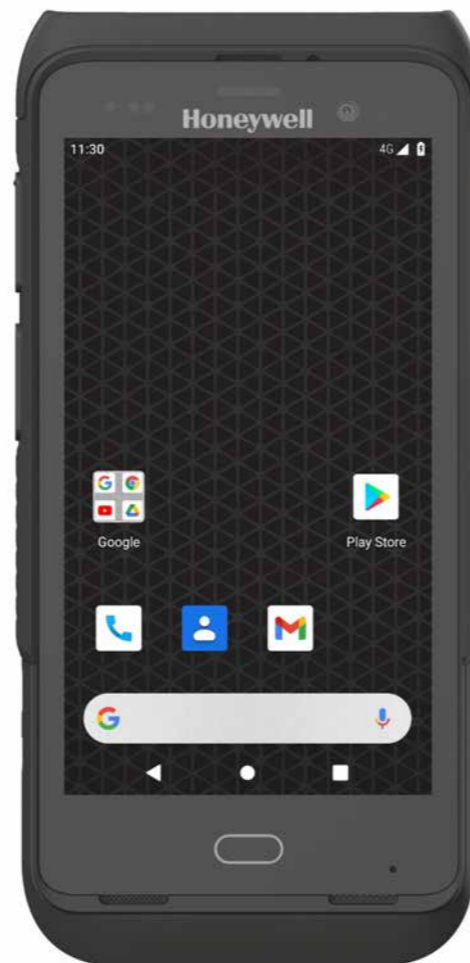
(Stylus is NOT included, but available to order separately as an accessory)

S0703 Standard Range

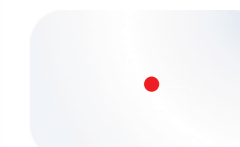
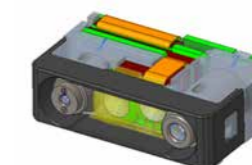


No Audio Jack / USB Type C

(WWAN Models CT45P-L1N-xxxxxxx)



N6803 FlexRange™



3.5mm Audio Jack / USB Type C
(WiFi Models Only CT45P-LON-xxxxxxx)

CT45 XP Android - 4G WWAN 2 x Nano SIM - S0703 - 6GB RAM/ 64GB Flash

CT45P-L1N-37D120G

CT45XP, WWAN,6GB/64GB, 5-inch 1920x1080P full HD, S0703 Standard Range, 13MP Rear Camera/8MP Front Camera, 802.11 a/b/g/n/ac/r/k/mc, Wifi-ax ready, Dual Nano SIM, BT5.1 & 2nd BLE, Android GMS, Battery, Warm Swap, IP68&65, Metal battery latch button, USB 3.0 Type C OTG, Push To Talk (PTT)

CT45 XP Android - 4G WWAN 1 x eSIM & 1 x Nano SIM - S0703 - 6GB RAM/ 64GB Flash

CT45P-L1N-37D1E0G

CT45XP, WWAN,6GB/64GB, 5-inch 1920x1080P full HD, S0703 Standard Range, 13MP Rear Camera/8MP Front Camera, 802.11 a/b/g/n/ac/r/k/mc, Wifi-ax ready, eSIM & Nano SIM, BT5.1 & 2nd BLE, Android GMS, Battery, Warm Swap, IP68&65, Metal battery latch button, USB 3.0 Type C OTG, Push To Talk (PTT)

CT45 XP Android - WiFi Only - S0703 - 6GB RAM/ 64GB Flash

CT45P-X0N-37D100G

CT45XP, WLAN,6GB/64GB, 5-inch 1920x1080P full HD, S0703 Standard Range, 13MP Rear Camera/8MP Front Camera, 802.11 a/b/g/n/ac/r/k/mc/ax, 2X2 MIMO, BT5.1 & 2nd BLE, Android GMS, Battery, Warm Swap, IP68&65, Metal battery latch button, 3.5mm Audio jack, USB 3.0 Type C OTG, Push To Talk (PTT) (Does not include headset, order CT40-HDST-35MM separately)

CT45 XP Android - 4G WWAN 2 x Nano SIM - N6803 - 6GB RAM/ 64GB Flash

CT45P-L1N-38D120G

CT45XP, WWAN,6GB/64GB, 5-inch 1920x1080P full HD, N6803 FlexRange, 13MP Rear Camera/8MP Front Camera, 802.11 a/b/g/n/ac/r/k/mc, Wifi-ax ready, Dual Nano SIM, BT5.1 & 2nd BLE, Android GMS, Battery, Warm Swap, IP68&65, Metal battery latch button, USB 3.0 Type C OTG, Push To Talk (PTT)

CT45 XP Android - 4G WWAN 1 x eSIM & 1 x Nano SIM - N6803 - 6GB RAM/ 64GB Flash

CT45P-L1N-38D1E0G

CT45XP, WWAN,6GB/64GB, 5-inch 1920x1080P full HD, N6803 FlexRange, 13MP Rear Camera/8MP Front Camera, 802.11 a/b/g/n/ac/r/k/mc, Wifi-ax ready, eSIM & Nano SIM, BT5.1 & 2nd BLE, Android GMS, Battery, Warm Swap, IP68&65, Metal battery latch button, USB 3.0 Type C OTG, Push To Talk (PTT)

CT45 XP Android - WiFi Only - N6803 - 6GB RAM/ 64GB Flash

CT45P-X0N-38D100G

CT45XP, WLAN,6GB/64GB, 5-inch 1920x1080P full HD, N6803 FlexRange, 13MP Rear Camera/8MP Front Camera, 802.11 a/b/g/n/ac/r/k/mc/ax, 2X2 MIMO, BT5.1 & 2nd BLE, Android GMS, Battery, Warm Swap, IP68&65, Metal battery latch button, 3.5mm Audio jack, USB 3.0 Type C OTG, Push To Talk (PTT) (Does not include headset, order CT40-HDST-35MM separately)

Honeywell Repair Services

SVCCT45-SG3N



CT45 / CT45 XP, Edge Service, Gold Maintenance Contract, 3 Year, New Contract

ADD SVCREPLACE-MOB3

AddOn, Edge Service, Device Replacement, Mobility, 3 Year

CT45 XP CONFIGURATION MAP

Android

CT45P-										DESCRIPTION	NOTES
BLUETOOTH/ WIFI	WWAN	NFC	MEMORY	IMAGER	CAMERA	OPERATING SYSTEM	SIM	OPTIONS	DOMAIN		
L										WiFi 5 802.11 a/b/g/n/ac + Bluetooth 5.1	IEEE 802.11 a/b/g/n/ac/d/e/h/i/k/r/w/mc ; Wi-Fi certified V5.1 Bluetooth and BLE Supported Bluetooth Profiles: HFP, PBAP, A2DP, AVRCP, OPP, SPP, GATT
X										WiFi 6 802.11 a/b/g/n/ac/ax + Bluetooth 5.1 2x2 MIMO	IEEE 802.11 a/b/g/n/ac/ax/d/e/h/i/k/r/w/mc ; Wi-Fi certified V5.1 Bluetooth and BLE Supported Bluetooth Profiles: HFP, PBAP, A2DP, AVRCP, OPP, SPP, GATT
	0									No WWAN	
	1									LTE (4G) GPS, UMTS/HSPA+ (3G) GSM/GPRS/EDGE	WWAN RADIO (ATT/VZW/SPRINT/TMO/NA/EU) LTE – BANDS 1,2,3,4, 5,7,8,12,13,14,17,19,20,25,26,28,29,30,38,39,40,41,66,71 UMTS/HSPA+ (3G) – BANDS 1, 2, 4, 5, 6, 8, 9, 19 / GSM/GPRS/EDGE QUAD-BAND (850/900/1800/1900 MHZ)
		N								Near Field Communications (NFC)	Integrated NFC reader, compliant with ISO/IEC 14443 A, ISO/IEC 14443 B, ISO/IEC 15693 (iCode), MIFARE 1K / 4K, MIFARE DESFire, Sony FeliCa, ISO/IEC 18092 (Type F)
		--									
			3							6GB RAM, 64GB Flash Memory	Qualcomm QCS4290/ QCM4290 octa-core 2.0GHz
				7						1D/2D Imager (S0703SR) – Standard Range	
				8						1D/2D Imager (N6803FR) – FlexRange™	
					D					13MP Rear Camera / 8MP Front Camera	
						1				Android (GMS)	Google Mobile Services (GMS) certified – Play Store
						2				Android (Non-GMS)	
							0			No SIM slot	
							2			2 x Nano SIM Slots	
								E		1 x eSIM & 1 x Nano SIM Slot	
									0	Standard	
									C	China (WWAN Only)	China
									G	Global (WWAN or WiFi)	Algeria, Argentina, Australia, Austria, Belarus, Belgium, Bolivia, Brazil, Canada, Chile, Colombia , Costa Rica, Croatia, Czech Republic, Denmark, Dominican Republic, Ecuador, Egypt, Estonia, Finland, France, Germany, Greece, Guatemala, Hong Kong, Hungary, India, Ireland, Israel, Italy, Japan, Lithuania, Malaysia, Mexico, Morocco , Netherlands, New Zealand, Norway, Peru, Philippines, Poland, Portugal, Romania, Russian Fed., Saudi Arabia, Serbia, Singapore, Slovakia, Slovenia, South Africa, South Korea, Spain, Sweden, Switzerland, Taiwan, Thailand, Tunisia, Turkey, UAE, Ukraine, United Kingdom, United States of America



HONEYWELL EDGE SERVICES

CT45 / CT45 XP – Repair Services

Honeywell Edge Services give you the confidence of having leading-class technologies combined with service and support plans that are designed to keep you operational for longer.

Gold Repair Services – 3 Year

The most flexible contract in the industry. The Edge Services Gold Support contract allows you to select the right coverage for your organization, including 5-Day Depot Repairs and:

Service Overview

- Repair or replacement of damaged components, wear and tear, and accidental damage.
- Flexibility to add any Add-On Service
- Android Service - includes Android OS Upgrades, Maintenance Releases and Security Patches

PART NUMBER	DESCRIPTION
SVCCT45-SG3N	CT45 / CT45 XP, Edge Service, GOLD Maintenance Contract, 5 Day Turnaround, 3 Year , New Contract

Add-On Accessory Replacement Service

Provides replacement chargers, docks, charging cables, or scan handles should they be damaged or stop working.

ADD SVCACC-MOB3	AddOn, Edge Service, Accessory Service, Mobility, 3 Year . Service covers docks, charger cradles, scan handles
------------------------	---

Add-On Battery Replacement Service

Provides replacement batteries every 18 months after purchase.

ADD SVCBATTERY-MOB3	AddOn, Edge Service, Battery Service, Mobility, 3 Year , 1 Replacement Battery over life of contract
----------------------------	---

Add-On Device Replacement Service

Replacement devices should a device be damaged beyond repair.

ADD SVCREPLACE-MOB3	AddOn, Edge Service, Device Replacement, Mobility, 3 Year
----------------------------	--

Add-On Image Management Service

Ensures that when a device returns from being repaired, it has all the proper applications loaded back on the device.

ADD SVCIMAGEMGMT-MOB3	AddOn, Edge Service, Image Service, Mobility, 3 Year
------------------------------	---

Add-On Spare Management Service

Manages every aspect of your spare pool.

ADD SVCSPAREMGMT-MOB3	AddOn, Edge Service, Advanced Exchange, Mobility, 3 Year . Customer owned spare pool, Minimum Purchase required, contact your local Honeywell Service Representative for more information.
------------------------------	---

Add-On 2-Day Turnaround Depot Upgrade

Upgrade your Gold Maintenance Contract from 5-Day to 2-Day turnaround at the repair depot.

ADD SVC2DAYDEPOT-MOB3	AddOn, Edge Service, 2-Day Depot Upgrade, 3-Year Agreement, Requires purchase of a 3 Year Gold Maintenance Contract.
------------------------------	---

Platinum Repair Services – 3 Year

The Edge Services Platinum Support contract is the only total support contract in the industry today offering 2-Day Depot Repairs or Spare Pool Management with 3-year contract, that includes:

Service Overview

- Repair or replacement of damaged components
- SVCREPLACE-MOB3 - Replacement devices should a device be damaged beyond repair
- SVCACC-MOB3 - Accessory replacement service
- SVCBATTERY-MOB3 - Battery replacement service
- SVCSPAREMGMT-MOB3 - Spare pool management (optional, minimum quantity required)
- Telephone-based technical support
- Android Service - includes Android OS Upgrades, Maintenance Releases and Security Patches

PART NUMBER	DESCRIPTION
SVCCT45-SP3N	CT45 / CT45 XP, Edge Service, PLATINUM, 2 Day Turnaround, 3 Year, New Contract



HONEYWELL EDGE SERVICES

CT45 / CT45 XP – Repair Services

Honeywell Edge Services give you the confidence of having leading-class technologies combined with service and support plans that are designed to keep you operational for longer.

Gold Repair Services – 5 Year

The most flexible contract in the industry. The Edge Services Gold Support contract allows you to select the right coverage for your organization, including 5-Day Depot Repairs and:

Service Overview

- Repair or replacement of damaged components, wear and tear, and accidental damage.
- Flexibility to add any Add-On Service
- Android Service - includes Android OS Upgrades, Maintenance Releases and Security Patches

PART NUMBER	DESCRIPTION
SVCCT45-SG5N	CT45 / CT45 XP, Edge Service, GOLD Maintenance Contract, 5 Day Turnaround, 5 Year , New Contract

Add-On Accessory Replacement Service

Provides replacement chargers, docks, charging cables, or scan handles should they be damaged or stop working.

ADD SVCACC-MOB5	AddOn, Edge Service, Accessory Service , Mobility, 5 Year . Service covers docks, charger cradles, scan handles
------------------------	--

Add-On Battery Replacement Service

Provides replacement batteries every 18 months after purchase.

ADD SVCBATTERY-MOB5	AddOn, Edge Service, Battery Service, Mobility, 5 Year , 2 Replacement Battery over life of contract
----------------------------	---

Add-On Device Replacement Service

Replacement devices should a device be damaged beyond repair.

ADD SVCREPLACE-MOB5	AddOn, Edge Service, Device Replacement, Mobility, 5 Year
----------------------------	--

Add-On Image Management Service

Ensures that when a device returns from being repaired, it has all the proper applications loaded back on the device.

ADD SVCIMAGEMGMT-MOB5	AddOn, Edge Service, Image Service, Mobility, 5 Year
------------------------------	---

Add-On Spare Management Service

Manages every aspect of your spare pool.

ADD SVCSPAREMGMT-MOB5	AddOn, Edge Service, Advanced Exchange, Mobility, 5 Year . Customer owned spare pool, Minimum Purchase required, contact your local Honeywell Service Representative for more information.
------------------------------	---

Add-On 2-Day Turnaround Depot Upgrade

Upgrade your Gold Maintenance Contract from 5-Day to 2-Day turnaround at the repair depot.

ADD SVC2DAYDEPOT-MOB5	AddOn, Edge Service, 2-Day Depot Upgrade, 5-Year Agreement, Requires purchase of a 5 Year Gold Maintenance Contract.
------------------------------	---

Platinum Repair Services – 5 Year

The Edge Services Platinum Support contract is the only total support contract in the industry today offering 2-Day Depot Repairs or Spare Pool Management with 5-year contract, that includes:

Service Overview

- Repair or replacement of damaged components
- SVCREPLACE-MOB5 - Replacement devices should a device be damaged beyond repair
- SVCACC-MOB5 - Accessory replacement service
- SVCBATTERY-MOB5 - Battery replacement service
- SVCSPAREMGMT-MOB5 - Spare pool management (optional, minimum quantity required)
- Telephone-based technical support
- Android Service - includes Android OS Upgrades, Maintenance Releases and Security Patches

PART NUMBER	DESCRIPTION
SVCCT45-SP5N	CT45 / CT45 XP, Edge Service, PLATINUM, 2 Day Turnaround, 5 Year, New Contract



HONEYWELL REPAIR SERVICES

CT45 / CT45 XP – Repair Services Coverage

For Best-In-Class Service

CT45 / CT45 XP



Warranty Cover Against Product Defect

BASIC Service

Gold Coverage:

- Accidental Damage
- Wear & Tear
- Android Service

Includes Replacement of:

- Handstrap
- Screen Protector




Flexible GOLD Add-Ons ordered separately

- SVCACC-MOB3 Accessories
- SVCBATTERY-MOB3 Batteries
- SVCREPLACE-MOB3 Device Replacement
- SVCIMAGEMGMT-MOB3 Image Service
- SVCSPAREMGMT-MOB3 Advanced Exchange

GOLD Service

Platinum Coverage

- Battery Replacement
- Coverage for Docks/ Chargers
- Android Service

- Accidental Damage
- Device Replacement
- Wear & Tear



Pistol Grip



Vehicle Dock



Car Chargers



Battery
(3 Year – 1 replacement battery per CT45)
(5 Year – 2 replacement batteries per CT45)



Docks



Dock Power Supplies

PLATINUM Service

COVERAGE	PART NUMBER	DESCRIPTION
BASIC	SVCCT45-EXW2	CT45 / CT45 XP, BASIC, 10-15 Day Turnaround, 2 Years (1 Year Factory Warranty + 1 Year Extended)
GOLD	SVCCT45-SG3N	CT45 / CT45 XP, Edge Service, GOLD Maintenance Contract, 5 Day Turnaround, 3 Year, New Contract
ADD	SVCACC-MOB3	AddOn, Edge Service, Accessory Service, Mobility, 3 Year. Service covers docks, charger cradles, scan handles and car adapter
ADD	SVCBATTERY-MOB3	AddOn, Edge Service, Battery Service, Mobility, 3 Year, 1 Replacement Battery over life of contract
ADD	SVCREPLACE-MOB3	AddOn, Edge Service, Device Replacement, Mobility, 3 Year
ADD	SVCIMAGEMGMT-MOB3	AddOn, Edge Service, Image Service, Mobility, 3 Year
ADD	SVCSPAREMGMT-MOB3	AddOn, Edge Service, Advanced Exchange, Mobility, 3 Year. Customer owned spare pool, Minimum Purchase required.
PLATINUM	SVCCT45-SP3N	CT45 / CT45 XP, Edge Service, PLATINUM, 2 Day Turnaround, 3 Year, New Contract

CT45 / CT45 XP SOFTWARE

Device Client Pack

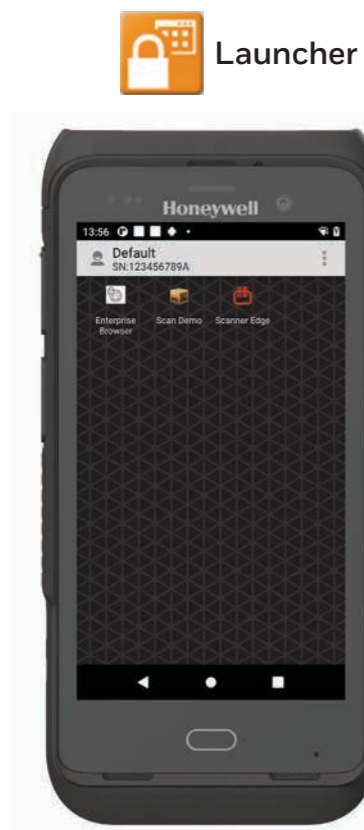
The Device Client Pack (DCP) includes Launcher, Enterprise Browser, BasicTE, and Mobility Web SDK, these applications are pre-loaded on the device.

All CT45/CT45 XP units include a 1 Year DCP Termed Pre-License for initial evaluation of the DCP applications (it does NOT include a Perpetual Pre-License), after the 1 Year Term period expires, a Perpetual or Term license is required to be purchased.

There are two licensing options that can be purchased for DCP:

1. Perpetual License Purchase DCP-001 - Perpetual Licenses operate without expiration for the authorized software version features, and includes 1 year of Maintenance. Add additional Software Maintenance separately.
2. Term + Maintenance License Purchase DCP-SFT1, DCP-SFT2, DCP-SFT3, DCP-SFT4 or DCP-SFT5 - Term + Maintenance Licenses provide software operation, software new version features, and tech support, all for a defined period.

Device Client Pack



Launcher - gives the customer total control over which apps can be run on the device.



BasicTE Android device Terminal Emulation is a simplified alternative for those not yet ready to upgrade to SmartTE.



Enterprise Browser provides corporations the ability to run standard web applications from a controlled environment.

Order Separately



Terminal Emulator - Full featured SmartTE allows legacy green screen apps to be transformed to the look and feel of native apps. These clients are single session Honeywell TE Licensing. They can also utilize traditional single or multi-session StayLinked Licenses.

SmartTE is Pre-Loaded, but requires license SMARTTE-001 to be purchased separately.

PART NUMBER	DESCRIPTION
DCP-001	Device Client Pack Perpetual License (DCP) includes 1 Year Software Maintenance. License covers Launcher, Enterprise Browser, BasicTE, and Mobility Web SDK. Purchase additional years of Software Maintenance DCP-SFT1, DCP-SFT2, DCP-SFT3, DCP-SFT4 or DCP-SFT5 prior to maintenance expiring.
DCP-SFT1	Device Client Pack - 1 Year Term + Maintenance (License covers Launcher, Enterprise Browser, BasicTE, and Mobility Web SDK)
DCP-SFT2	Device Client Pack - 2 Year Term + Maintenance (License covers Launcher, Enterprise Browser, BasicTE, and Mobility Web SDK)
DCP-SFT3	Device Client Pack - 3 Year Term + Maintenance (License covers Launcher, Enterprise Browser, BasicTE, and Mobility Web SDK)
DCP-SFT4	Device Client Pack - 4 Year Term + Maintenance (License covers Launcher, Enterprise Browser, BasicTE, and Mobility Web SDK)
DCP-SFT5	Device Client Pack - 5 Year Term + Maintenance (License covers Launcher, Enterprise Browser, BasicTE, and Mobility Web SDK)

PART NUMBER	DESCRIPTION
SMARTTE-001	SMARTTE - SINGLE PATH W-1 Year Maintenance
SMARTTE-SFT3	SMARTTE - 3 Year Software Maintenance
SMARTTE-SFT5	SMARTTE - 5 Year Software Maintenance

CT45 / CT45 XP SCANNING

Scan Handle Side by Side Comparison

Use for Scan intensive applications.



1



2

	PART NUMBER	DESCRIPTION
1	CT45-SH-UVN	CT45 and CT45 XP universal scan handle to be used with CT45/XP without Protective Boot
2	CT45-SH-UVB	CT45 and CT45 XP universal scan handle to be used with CT45/XP with Protective Boot (includes CT45-PB-1)

CT45 / CT45 XP SCANNING

Option 1 - Scan Handle

Use for Scan intensive applications, also compatible with using Rear Camera with Scan Handle installed.
 This scan handle is ONLY compatible with Non-Booted charging docks.



PART NUMBER	DESCRIPTION
1	CT45-SH-UVN
	CT45 and CT45 XP universal scan handle to be used with CT45/XP without protective boot Compatible for use with Home Base and Charge Base without removal.
	CT40-HB-0 / CT40-HB-UVN-0 Home Base
	CT40-EB-0 / CT40-EB-UVN-0 Ethernet Home Base
	CT40-DB-0 / CT40-DB-UVN-0 Display Base
	CT40-CB-CNV-0 / CT40-CB-UVN-0 Quad Charge Base
	CT40-NB-CNV-0 / CT40-NB-UVN-0 Quad Net Base
	Not Compatible with the Protective Boot Bases
	CT40-HB-UVB-0 Protective Boot Home Base
	CT40-EB-UVB-0 Protective Boot Ethernet Home Base
	CT40-DB-UVB-0 Protective Boot Display Base
	CT40-CB-PB-0 Protective Boot Quad Charge Base
	CT40-NB-PB-0 Protective Boot Quad Net Base
	CT40-CB-UVB-0 Protective Boot Quad Charge Base
	CT40-NB-UVB-0 Protective Boot Quad Net Base

CT45 / CT45 XP SCANNING

Option 2 - Scan Handle with Protective Boot

Use for Scan intensive applications with additional protection of the protective boot.
 This scan handle is ONLY compatible with Booted charging docks.



PART NUMBER	DESCRIPTION												
1	CT45-SH-UVB	CT45 and CT45 XP universal scan handle to be used with CT45/XP with Protective Boot (includes CT45-PB-1) Compatible for use with Protective Boot Home Base and Charge Base without removal.											
	CT40-HB-UVB-0	Protective Boot Home Base											
	CT40-EB-UVB-0	Protective Boot Ethernet Home Base											
	CT40-DB-UVB-0	Protective Boot Display Base											
	CT40-CB-PB-0	Protective Boot Quad Charge Base											
	CT40-NB-PB-0	Protective Boot Quad Net Base											
	<table border="0"> <tr> <td>CT40-CB-UVB-0</td> <td>Protective Boot Quad Charge Base</td> </tr> <tr> <td>CT40-NB-UVB-0</td> <td>Protective Boot Quad Net Base</td> </tr> </table>	CT40-CB-UVB-0	Protective Boot Quad Charge Base	CT40-NB-UVB-0	Protective Boot Quad Net Base								
CT40-CB-UVB-0	Protective Boot Quad Charge Base												
CT40-NB-UVB-0	Protective Boot Quad Net Base												
	Not Compatible with the Non-Protective Boot Bases <table border="0"> <tr> <td>CT40-HB-0 / CT40-HB-UVN-0</td> <td>Home Base</td> <td>CT40-CB-CNV-0 / CT40-CB-UVN-0</td> <td>Quad Charge Base</td> </tr> <tr> <td>CT40-EB-0 / CT40-EB-UVN-0</td> <td>Ethernet Home Base</td> <td>CT40-NB-CNV-0 / CT40-NB-UVN-0</td> <td>Quad Net Base</td> </tr> <tr> <td>CT40-DB-0 / CT40-DB-UVN-0</td> <td>Display Base</td> <td></td> <td></td> </tr> </table>	CT40-HB-0 / CT40-HB-UVN-0	Home Base	CT40-CB-CNV-0 / CT40-CB-UVN-0	Quad Charge Base	CT40-EB-0 / CT40-EB-UVN-0	Ethernet Home Base	CT40-NB-CNV-0 / CT40-NB-UVN-0	Quad Net Base	CT40-DB-0 / CT40-DB-UVN-0	Display Base		
CT40-HB-0 / CT40-HB-UVN-0	Home Base	CT40-CB-CNV-0 / CT40-CB-UVN-0	Quad Charge Base										
CT40-EB-0 / CT40-EB-UVN-0	Ethernet Home Base	CT40-NB-CNV-0 / CT40-NB-UVN-0	Quad Net Base										
CT40-DB-0 / CT40-DB-UVN-0	Display Base												

CT45 / CT45 XP DESKTOP COMMUNICATIONS

Option 1 – Portable – Non-Booted or Booted

USB Communication to PC/ Mac OR Snap-On Charging.



PART NUMBER	DESCRIPTION
1 CT45-SN-CNV	CT45 and CT45XP Booted and Non-Booted Snap On adaptor. Provides tethered USB client connectivity. Compatible with hand strap, battery pack, and scan handle. Charges mobile computer battery in four hours or less. Kit includes snap-on adaptor with convertible adaptor (CT45-SN-IST).
2 50136024-001	KIT,5V/2A PS,5 PLUGS PACKED, ROW Includes US,UK,AU,EU,IN adapters

Option 2 – Fixed with Universal Cup

USB and optional Ethernet Communication & Single Battery Charger.



PART NUMBER	DESCRIPTION
1A CT40-HB-UVN-0	Non-Booted HomeBase - Kit includes (CT40-UCP-N), Dock & Power Supply, No Power Cord
OR CT40-EB-UVN-0	Non-Booted eHomeBase – Ethernet Kit includes (CT40-UCP-N), Dock & Power Supply, No Power Cord
1B CT40-HB-UVB-0	Booted HomeBase - Kit includes (CT40-UCP-B), Dock & Power Supply, No Power Cord
OR CT40-EB-UVB-0	Booted eHomeBase – Ethernet Kit includes (CT40-UCP-B), Dock & Power Supply, No Power Cord
2 321-576-004	Cable Assembly - USB Type A to Type B
3 **	IEC C13 AC Power Cord – See Page 48 for Country Specific Power Cords

CT45 / CT45 XP COMMUNICATIONS

Option 3 – USB Type C On-The-Go (OTG) Desktop

USB C Communication to PC/ Mac OR Charging.



Option 4 – USB Type C On-The-Go (OTG) Vehicle

USB C Communication to Vehicle OR Charging.



PART NUMBER **DESCRIPTION**

1	CBL-500-120-S00-05	USB type A to type C, 1.2 m (3.9 ft)
2	50136024-001	KIT,5V/2A PS,5 PLUGS PACKED, ROW Includes US,UK,AU,EU,IN adapters

PART NUMBER **DESCRIPTION**

1A	CBL-500-120-S00-05	USB type A to type C, 1.2 m (3.9 ft)
1B	CT45-SN-CNV	CT45 and CT45XP Booted and Non-Booted Snap On adaptor. Provides tethered USB client connectivity. Compatible with hand strap, battery pack, and scan handle. Charges mobile computer battery in four hours or less. Kit includes snap-on adaptor with convertible adaptor (CT45-SN-IST).
2	CT45-CIGR-1	Charging CT45, CT45XP, CT40 and CT40XP configurations on vehicle. Quick Charge 3.0 compliant. Requires CT45 USB adapter (CT45-SN-CNV) or USB cable (CBL-500-120-S00-05) to be ordered separately. (Converts 12 V/24 V cigarette lighter port to USB type-A power adapter for snap-on use in a vehicle)

CT45 / CT45 XP DESKTOP COMMUNICATIONS

Option 5 - Display Base with Universal Cup

Connect USB peripherals (keyboard, mouse) and External Monitor via HDMI.



PART NUMBER	DESCRIPTION
1A CT40-DB-UVN-0	Non-Booted Display Dock - Kit includes (CT40-UCP-N), Display Base & Power Supply, No Power Cord
1B CT40-DB-UVB-0	Booted Display Dock - Kit includes (CT40-UCP-B), Display Base & Power Supply, No Power Cord
2 **	IEC C13 AC Power Cord – See Page 48 for Country Specific Power Cords

CT45 / CT45 XP VEHICLE INSTALL

Option 1 – Portable/ Sub Contractor Install

Simple Vehicle Charging, portable between vehicles.

Compatible with CT45 and CT45 XP with or without CT45-PB-1 Protective Boot installed.



PART NUMBER **DESCRIPTION**

1	CT45-SN-CNV	CT45 and CT45XP Booted and Non-Booted Snap On adaptor. Provides tethered USB client connectivity. Compatible with hand strap, battery pack, and scan handle. Charges mobile computer battery in four hours or less. Kit includes snap-on adaptor with convertible adaptor (CT45-SN-IST).
2	CT45-CIGR-1	Charging CT45, CT45XP, CT40 and CT40XP configurations on vehicle. Quick Charge 3.0 compliant. Requires CT45 USB adapter (CT45-SN-CNV) or USB cable (CBL-500-120-S00-05) to be ordered separately. (Converts 12 V/24 V cigarette lighter port to USB type-A power adapter for snap-on use in a vehicle)

Option 2 – Portable/ Sub Contractor Install

Windscreen Suction Cup Mount, portable between vehicles.

Compatible with CT45 and CT45 XP with or without CT45-PB-1 Protective Boot installed.



Recommended Screws
8#-32-UNC
(Length = 0.5 inch)
50143775-001 Pack 4 Screws

PART NUMBER **DESCRIPTION**

1	CT45-VD-CNV	CT45 and CT45 XP Booted and Non-Booted Vehicle Dock. For charging CT45/XP with or without a convertible adaptor, compatible with hand strap. NFC tag integrated for seamless pairing with mobile computer. Kit includes vehicle dock (CT40-VD-CNV) with convertible adaptor (CT45-VD-IST).
2	RAM-B-166-202U	Suction Cup Mount Kit
3	50138169-001	Cigarette Lighter Power Adapter Cable

CT45 / CT45 XP VEHICLE INSTALL

Option 3 - Fixed Vehicle Install with Direct Connection to Vehicle Battery

Best used when the vehicle input voltage varies, 10- 30V.

Compatible with CT45 and CT45 XP with or without CT45-PB-1 Protective Boot installed.



PART NUMBER	DESCRIPTION
1 CT45-VD-CNV	CT45 and CT45 XP Booted and Non-Booted Vehicle Dock. For charging CT45/XP with or without a convertible adaptor, compatible with hand strap. NFC tag integrated for seamless pairing with mobile computer. Kit includes vehicle dock (CT40-VD-CNV) with convertible adaptor (CT45-VD-IST).
2 203-802-001	Vehicle Dock Installation Kit (Power Option: For connection of Vehicle Dock directly to vehicle battery. Includes power cables and cable mounting hardware)
3 805-611-001	Mounting Kit, V-Dock RoHS

CT45 / CT45 XP VEHICLE INSTALL

Option 4 - Fixed Vehicle Install with Direct Connection to Vehicle Battery - External Speaker

Best used when the vehicle input voltage varies, 10- 30V.

Compatible with CT45 and CT45 XP with or without CT45-PB-1 Protective Boot installed.



PART NUMBER	DESCRIPTION
1	CT45-VD-CNV-SPK CT45 and CT45 XP Booted and Non-Booted Vehicle Dock with External Speaker. For charging CT45/XP with or without a convertible adaptor, compatible with hand strap. NFC tag integrated for seamless pairing with mobile computer. Kit includes vehicle dock with convertible adaptor (CT45-VD-IST).
2	203-802-001 Vehicle Dock Installation Kit (Power Option: For connection of Vehicle Dock directly to vehicle battery. Includes power cables and cable mounting hardware)
3	805-611-001 Mounting Kit, V-Dock RoHS

CT45 / CT45 XP VEHICLE INSTALL

Option 5 - Fixed Vehicle Install with Direct Connection to Vehicle Battery/ Fuse Block

Best used when the vehicle input voltage varies, 10- 30V.

Compatible with CT45 and CT45 XP with or without CT45-PB-1 Protective Boot installed.



	PART NUMBER	DESCRIPTION
1	CT45-VD-CNV	CT45 and CT45 XP Booted and Non-Booted Vehicle Dock. For charging CT45/XP with or without a convertible adaptor, compatible with hand strap. NFC tag integrated for seamless pairing with mobile computer. Kit includes vehicle dock (CT40-VD-CNV) with convertible adaptor (CT45-VD-IST).
2	226-109-003	72" (182.88 cm) Fuse block Power Cable with spade lugs and 3-pin connector
OR	226-109-004	22" (55.8 cm) Fuse block Power Cable with spade lugs and 3-pin connector
3	805-611-001	Mounting Kit, V-Dock RoHS
OPTIONAL	203-803-001	Vehicle Dock Fuse Block Power Kit RoHS (Provides connection to vehicle fuse block). Requires Power Cable (226-109-003 or 226-109-004).

CT45 / CT45 XP VEHICLE INSTALL

Option 6 - Fixed Vehicle Install with Direct Connection to Vehicle Battery/ Fuse Block - External Speaker

Best used when the vehicle input voltage varies, 10- 30V.

Compatible with CT45 and CT45 XP with or without CT45-PB-1 Protective Boot installed.



PART NUMBER	DESCRIPTION
1 CT45-VD-CNV-SPK	CT45 and CT45 XP Booted and Non-Booted Vehicle Dock with External Speaker. For charging CT45/XP with or without a convertible adaptor, compatible with hand strap. NFC tag integrated for seamless pairing with mobile computer. Kit includes vehicle dock with convertible adaptor (CT45-VD-IST).
2 226-109-003	72" (182.88 cm) Fuse block Power Cable with spade lugs and 3-pin connector
OR 226-109-004	22" (55.8 cm) Fuse block Power Cable with spade lugs and 3-pin connector
3 805-611-001	Mounting Kit, V-Dock RoHS
OPTIONAL 203-803-001	Vehicle Dock Fuse Block Power Kit RoHS (Provides connection to vehicle fuse block). Requires Power Cable (226-109-003 or 226-109-004).

CT45 / CT45 XP VEHICLE INSTALL

Option 7 - Fixed Vehicle Install with Thor DC/DC Converter

Best used when the vehicle input voltage varies, 9-60V or 50-150V.

Compatible with CT45 and CT45 XP with or without CT45-PB-1 Protective Boot installed.



PART NUMBER	DESCRIPTION
1	CT45-VD-CNV CT45 and CT45 XP Booted and Non-Booted Vehicle Dock. For charging CT45/XP with or without a convertible adaptor, compatible with hand strap. NFC tag integrated for seamless pairing with mobile computer. Kit includes vehicle dock (CT40-VD-CNV) with convertible adaptor (CT45-VD-IST).
2	9000311PWRSPLY DC/DC Converter Kit, 9-60V DC, RoHS (Requires 226-109-003 Wiring Harness)
OR	9000313PWRSPLY DC/DC Converter Kit, 50-150V DC RoHS (Requires 226-109-003 Wiring Harness)
	226-109-003 72" (182.88 cm) Fuse block Power Cable with spade lugs and 3-pin connector
3	805-611-001 Mounting Kit, V-Dock RoHS

CT45 / CT45 XP VEHICLE INSTALL

Option 8 - Fixed Vehicle Install with Thor DC/DC Converter - External Speaker

Best used when the vehicle input voltage varies, 9-60V or 50-150V.

Compatible with CT45 and CT45 XP with or without CT45-PB-1 Protective Boot installed.



PART NUMBER	DESCRIPTION
1	CT45-VD-CNV-SPK CT45 and CT45 XP Booted and Non-Booted Vehicle Dock with External Speaker. For charging CT45/XP with or without a convertible adaptor, compatible with hand strap. NFC tag integrated for seamless pairing with mobile computer. Kit includes vehicle dock with convertible adaptor (CT45-VD-IST).
2	9000311PWRSPLY DC/DC Converter Kit, 9-60V DC, RoHS (Requires 226-109-003 Wiring Harness)
OR	9000313PWRSPLY DC/DC Converter Kit, 50-150V DC RoHS (Requires 226-109-003 Wiring Harness)
	226-109-003 72" (182.88 cm) Fuse block Power Cable with spade lugs and 3-pin connector
3	805-611-001 Mounting Kit, V-Dock RoHS

CT45 / CT45 XP VEHICLE INSTALL

CT45 Vehicle Dock (CT45-VD-CNV) Detail View - Non-Booted



Front View



Rear View



Insert
CT45-VD-IST



Angle View
Connector Detail



Angle View
CT45 Non-Booted

CT45 / CT45 XP VEHICLE INSTALL

CT45 Vehicle Dock (CT45-VD-CNV) Detail View - Booted



Protective Boot
CT45-PB-1



Angle View
Connector Detail



Angle View
CT45 Booted

Front View

Rear View

CT45 / CT45 XP VEHICLE INSTALL

CT45 Vehicle Dock with External Speaker (CT45-VD-CNV-SPK) Detail View - Non-Booted



Front View



Rear View



Insert
CT45-VD-IST



Angle View
Connector Detail



Angle View
CT45 Non-Booted

CT45 / CT45 XP VEHICLE INSTALL

CT45 Vehicle Dock with External Speaker (CT45-VD-CNV-SPK) Detail View - Booted



Front View



Rear View



Protective Boot
CT45-PB-1



Angle View
Connector Detail



Angle View
CT45 Booted

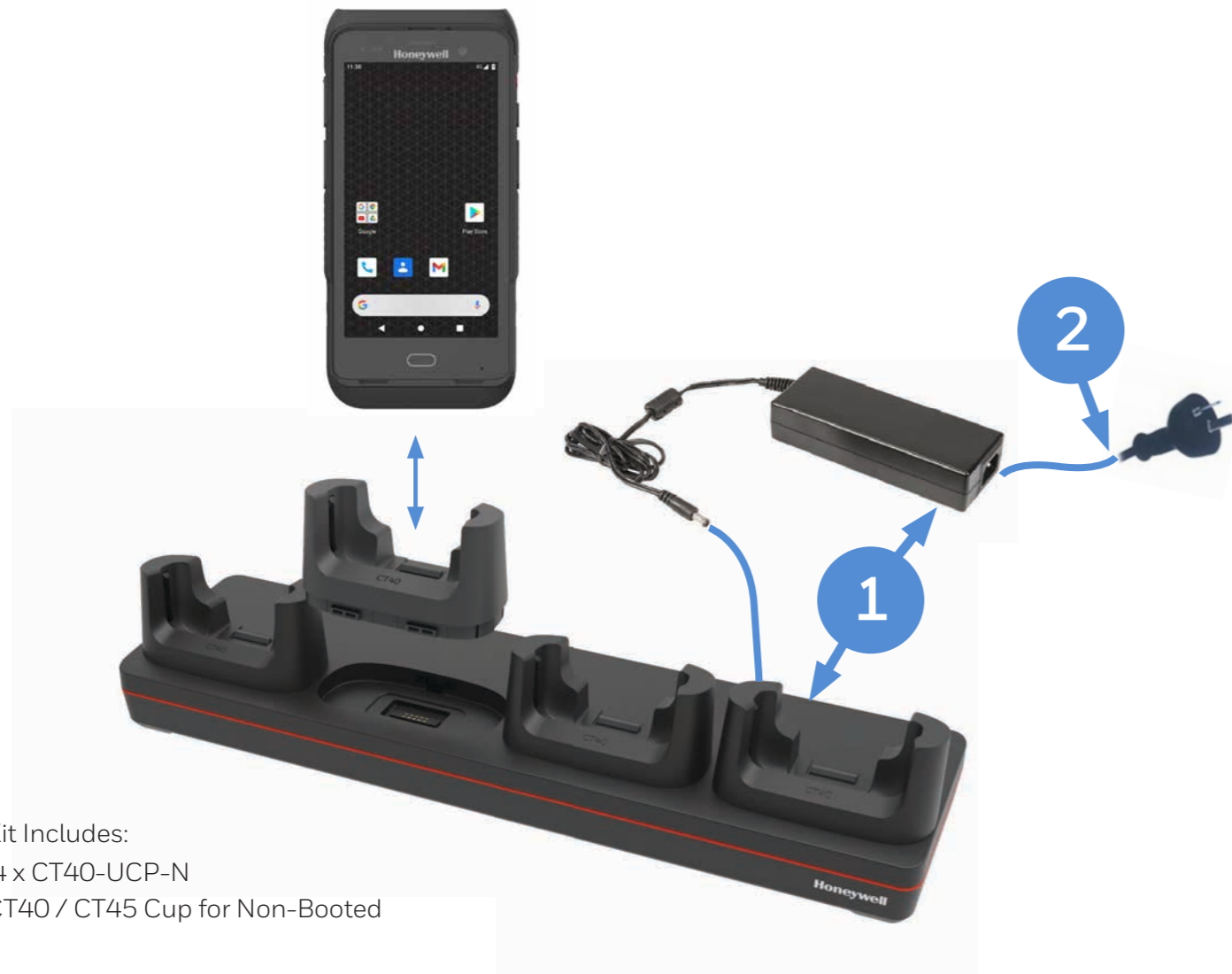
CT45 / CT45 XP CHARGING AND COMMUNICATION

Option 1 - Non-Booted Quad Charger with Universal Cup

Chargebase – Quad Dock Charge Only

Netbase – Quad Dock with Ethernet

Not Compatible with CT40-RB-00 Rubber Boot, CT40-PB-00 / CT40-PB-XP / CT45-PB-1 Protective Boot



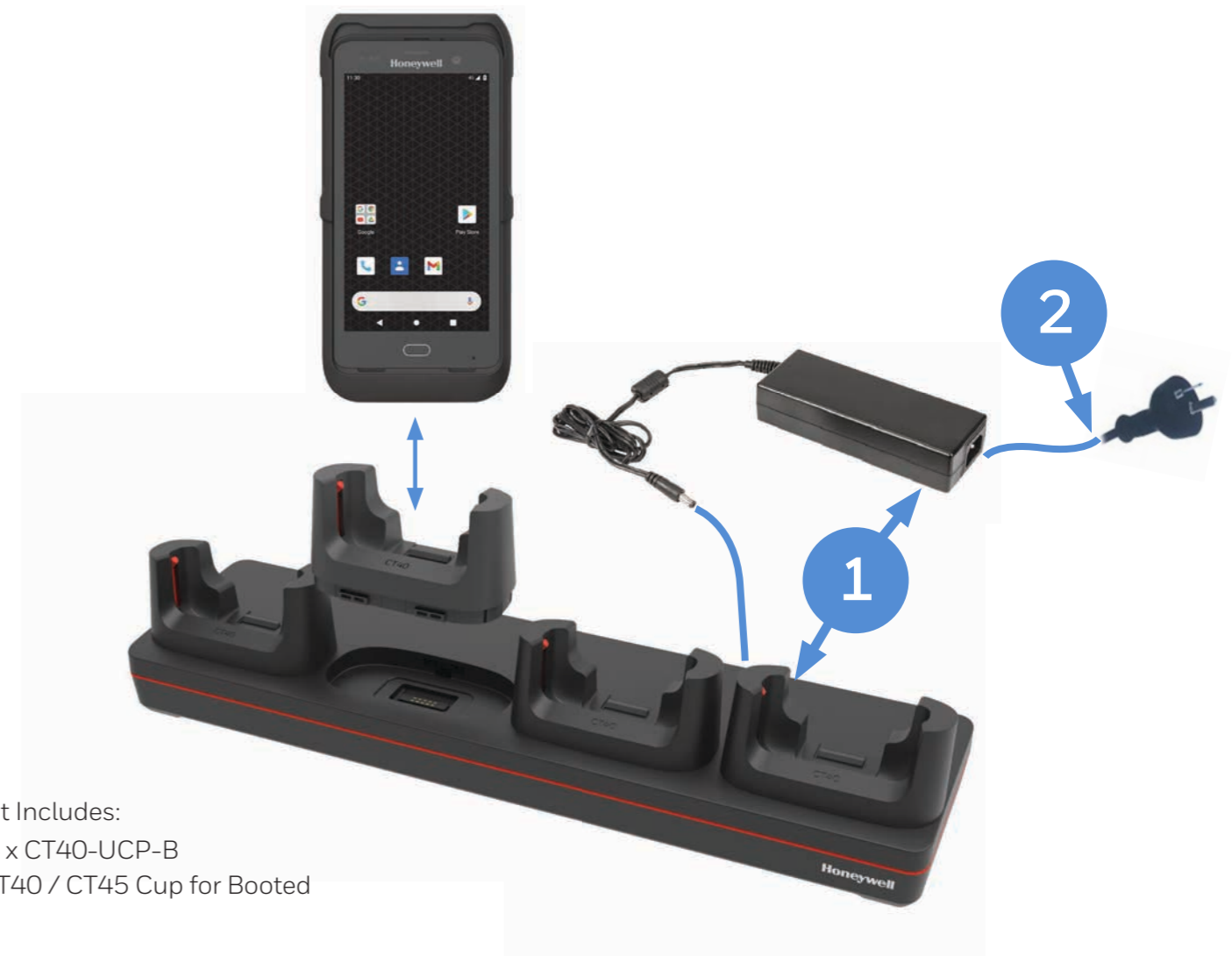
Kit Includes:
4 x CT40-UCP-N
CT40 / CT45 Cup for Non-Booted

Option 2 - Booted Quad Charger with Universal Cup

Chargebase – Quad Dock Charge Only

Netbase – Quad Dock with Ethernet

Compatible with CT40-PB-00 / CT40-PB-XP / CT45-PB-1 Protective Boot



Kit Includes:
4 x CT40-UCP-B
CT40 / CT45 Cup for Booted

	PART NUMBER	DESCRIPTION
1	CT40-CB-UVN-0	Non-Booted Chargebase - Kit includes Dock and Power Supply
OR	CT40-NB-UVN-0	Non-Booted Netbase - For Ethernet comms, Kit includes Dock and Power Supply
2	**	IEC C13 AC Power Cord – See Page 48 for Country Specific Power Cords

	PART NUMBER	DESCRIPTION
1	CT40-CB-UVB-0	Booted Chargebase - Kit includes Dock and Power Supply
OR	CT40-NB-UVB-0	Booted Netbase - For Ethernet comms, Kit includes Dock and Power Supply
2	**	IEC C13 AC Power Cord – See Page 48 for Country Specific Power Cords

CT45 / CT45 XP CHARGING AND COMMUNICATION

Option 3 - Non-Booted 5-Bay Charger with Battery Cup

Chargebase – Quad Dock Charge Only (4 terminals) and Quad Battery Charger (4 Batteries)
 Not Compatible with CT40-RB-00 Rubber Boot, CT40-PB-00 / CT40-PB-XP / CT45-PB-1 Protective Boot
 Compatible with Scan Handle



Top View with Scan Handle installed



Kit Includes:
 4 x CT40-UCP-N
 CT40 / CT45 Cup for Non-Booted

Option 4 - Booted 5-Bay Charger with Battery Cup

Chargebase – Quad Dock Charge Only (4 terminals) and Quad Battery Charger (4 Batteries)
 Compatible with CT40-PB-00 / CT40-PB-XP / CT45-PB-1 Protective Boot
 Compatible with Scan Handle



Top View with Scan Handle installed



Kit Includes:
 4 x CT40-UCP-B
 CT40 / CT45 Cup for Booted

PART NUMBER DESCRIPTION

1	CT45-5CB-UVN-BAT-0	CT45 Non-Booted 5 bay Universal Dock, charge up to 4 pieces of CT45/CT40/CT45XP/CT40XP and 4 pieces of CT40/CT45 batteries. Kit includes 5 bay Universal Dock and Power Adaptor. IEC C5 Power cord must be ordered separately.
2	**	IEC C5 AC Power Cord – See Page 48 for Country Specific Power Cords

PART NUMBER DESCRIPTION

1	CT45-5CB-UVB-BAT-0	CT45 Booted 5 bay Universal Dock, charge up to 4 pieces of CT45/CT40/CT45XP/CT40XP and 4 pieces of CT40/CT45 batteries. Kit includes 5 bay Universal Dock and Power Adaptor. IEC C5 Power cord must be ordered separately.
2	**	IEC C5 AC Power Cord – See Page 48 for Country Specific Power Cords

CT45 / CT45 XP CHARGING AND COMMUNICATION

Option 5 - Non-Booted 5-Bay Charger with Universal Cups

Chargebase – 5-Bay Dock Charge Only (5 terminals)

Not Compatible with CT40-RB-00 Rubber Boot, CT40-PB-00 / CT40-PB-XP / CT45-PB-1 Protective Boot

Compatible with Scan Handle



Top View with Scan Handle installed



Kit Includes:
5 x CT40-UCP-N
CT40 / CT45 Cup for Non-Booted

Option 6 - Booted 5-Bay Charger with Universal Cups

Chargebase – 5-Bay Dock Charge Only (5 terminals)

Compatible with CT40-PB-00 / CT40-PB-XP / CT45-PB-1 Protective Boot

Compatible with Scan Handle



Top View with Scan Handle installed



Kit Includes:
5 x CT40-UCP-B
CT40 / CT45 Cup for Booted

PART NUMBER	DESCRIPTION
1	CT45 Non-Booted 5 bay Universal Dock, charge up to 5 pieces of CT45/CT40/CT45XP or CT40XP. Kit includes 5 bay Universal Dock and Power Adaptor. IEC C5 Power cord must be ordered separately.
2	** IEC C5 AC Power Cord – See Page 48 for Country Specific Power Cords

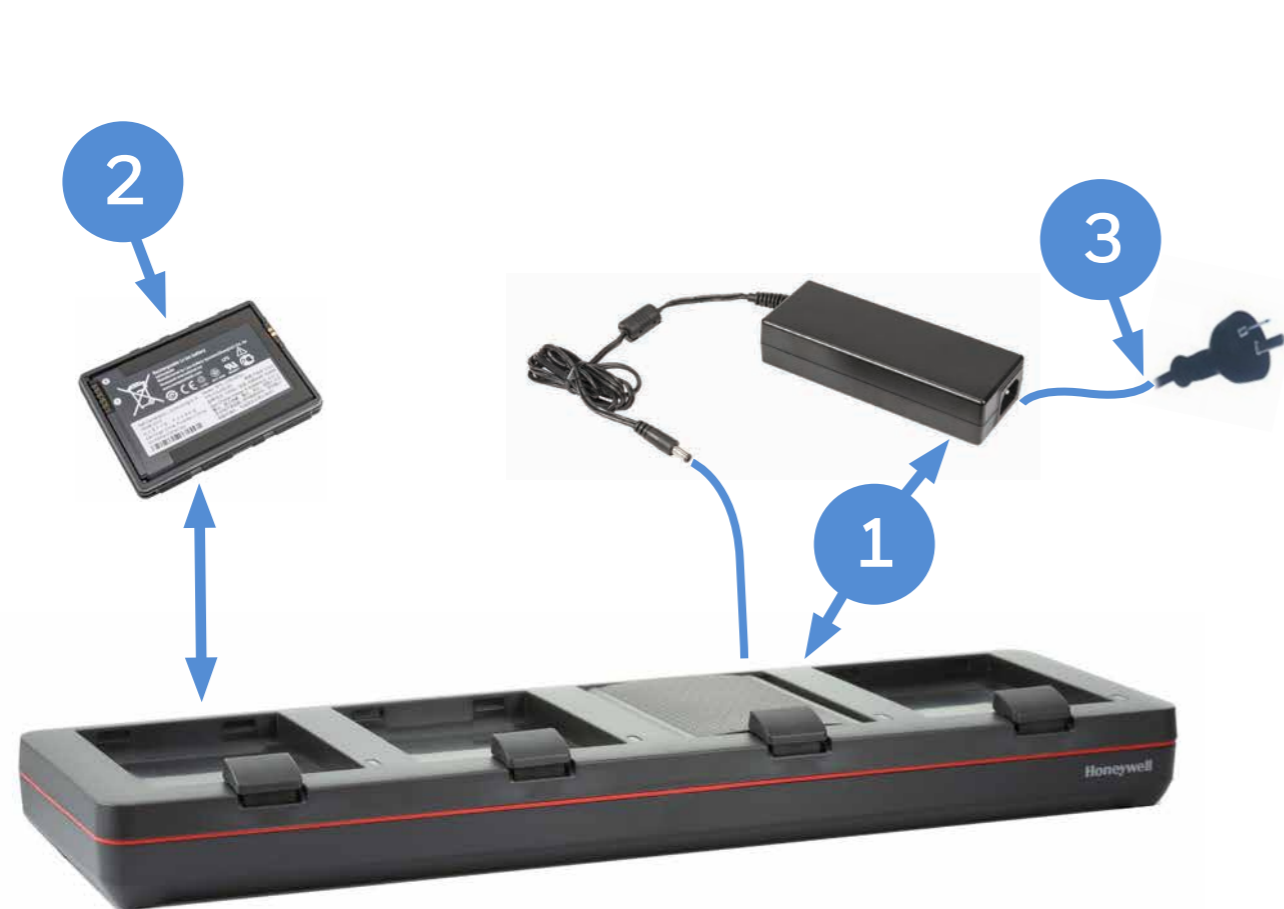
PART NUMBER	DESCRIPTION
1	CT45 Booted 5 bay Universal Dock, charge up to 5 pieces of CT45/CT40/CT45XP or CT40XP. Kit includes 5 bay Universal Dock and Power Adaptor. IEC C5 Power cord must be ordered separately.
2	** IEC C5 AC Power Cord – See Page 48 for Country Specific Power Cords

CT45 / CT45 XP CHARGING AND COMMUNICATION

Option 7 - Quad Battery Charger

Charge up to 4 batteries simultaneously

- Supports Batteries:
- 318-055-010 - Battery, Standard, CT40 Gen 1 (4090mAh)
 - 318-055-011 - Battery, Standard, CT40 Gen 1 (4040mAh)
 - 318-055-014 - Battery, Standard, CT40 Gen 2 (4090mAh)
 - 318-055-015 - Battery, Standard, CT40 Gen 2 (4020mAh)
 - 318-055-017 - Battery, Standard, CT40 Healthcare (4020mAh)
 - 318-055-067 - Battery, Standard, CT40 Gen 2 / XP, CT45 / XP (4020mAh)
 - 318-055-D67 - Battery, Standard, CT40 DRH / XP (4020mAh)
 - 318-055-H67 - Battery, Standard, CT40 Healthcare / XP (4020mAh)



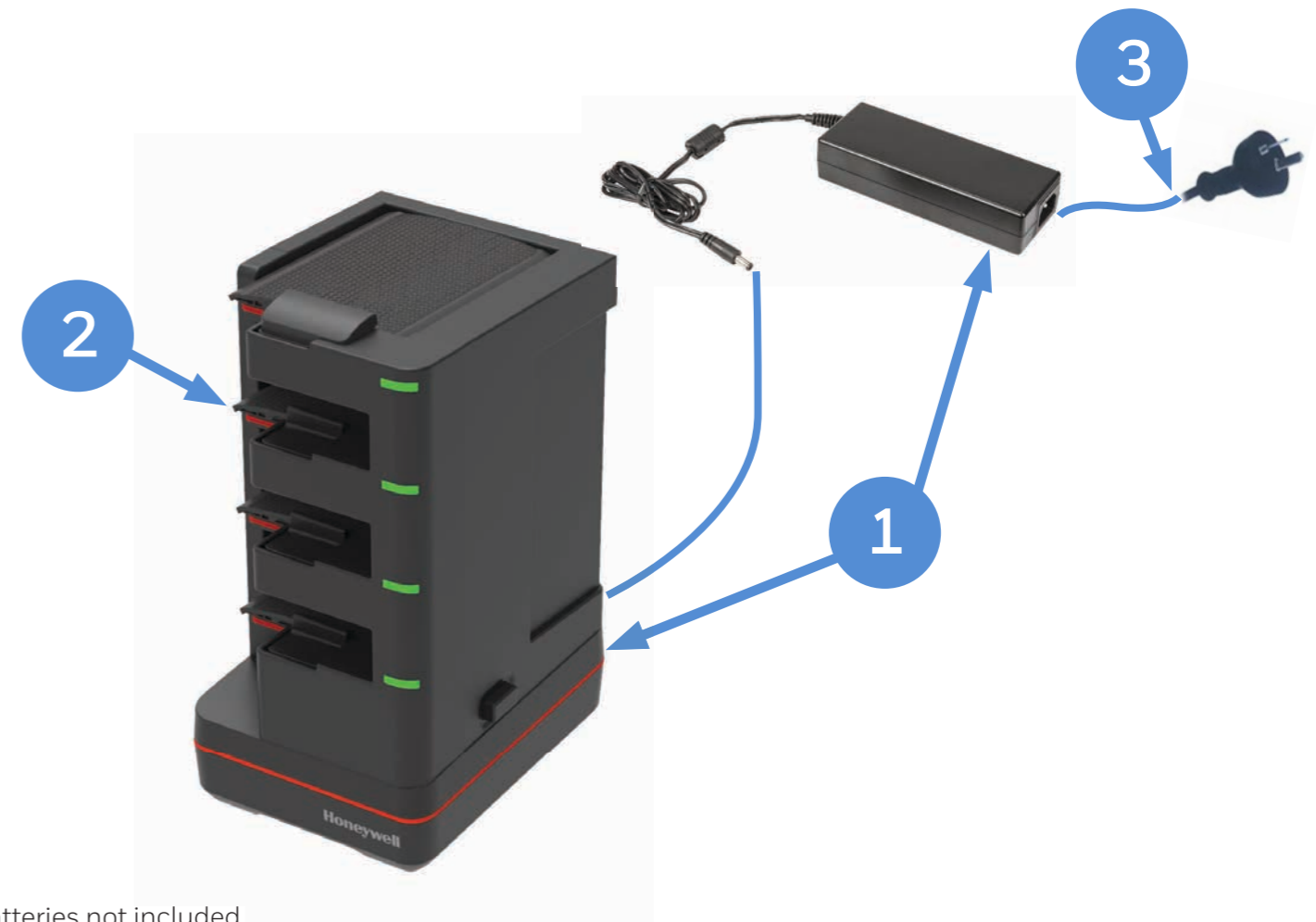
Batteries not included.

PART NUMBER	DESCRIPTION
1 CT40-QBC-0	Quad Battery Charger - Kit includes Dock and Power Supply
2 **	Spare Battery - See Page 32 for Battery Selection
3 **	IEC C13 AC Power Cord - See Page 48 for Country Specific Power Cords

Option 8 - 1-Bay Quad Battery Charger with Universal Cup

Charge up to 4 batteries simultaneously

- Supports Batteries:
- 318-055-010 - Battery, Standard, CT40 Gen 1 (4090mAh)
 - 318-055-011 - Battery, Standard, CT40 Gen 1 (4040mAh)
 - 318-055-014 - Battery, Standard, CT40 Gen 2 (4090mAh)
 - 318-055-015 - Battery, Standard, CT40 Gen 2 (4020mAh)
 - 318-055-017 - Battery, Standard, CT40 Healthcare (4020mAh)
 - 318-055-067 - Battery, Standard, CT40 Gen 2 / XP, CT45 / XP (4020mAh)
 - 318-055-D67 - Battery, Standard, CT40 DRH / XP (4020mAh)
 - 318-055-H67 - Battery, Standard, CT40 Healthcare / XP (4020mAh)



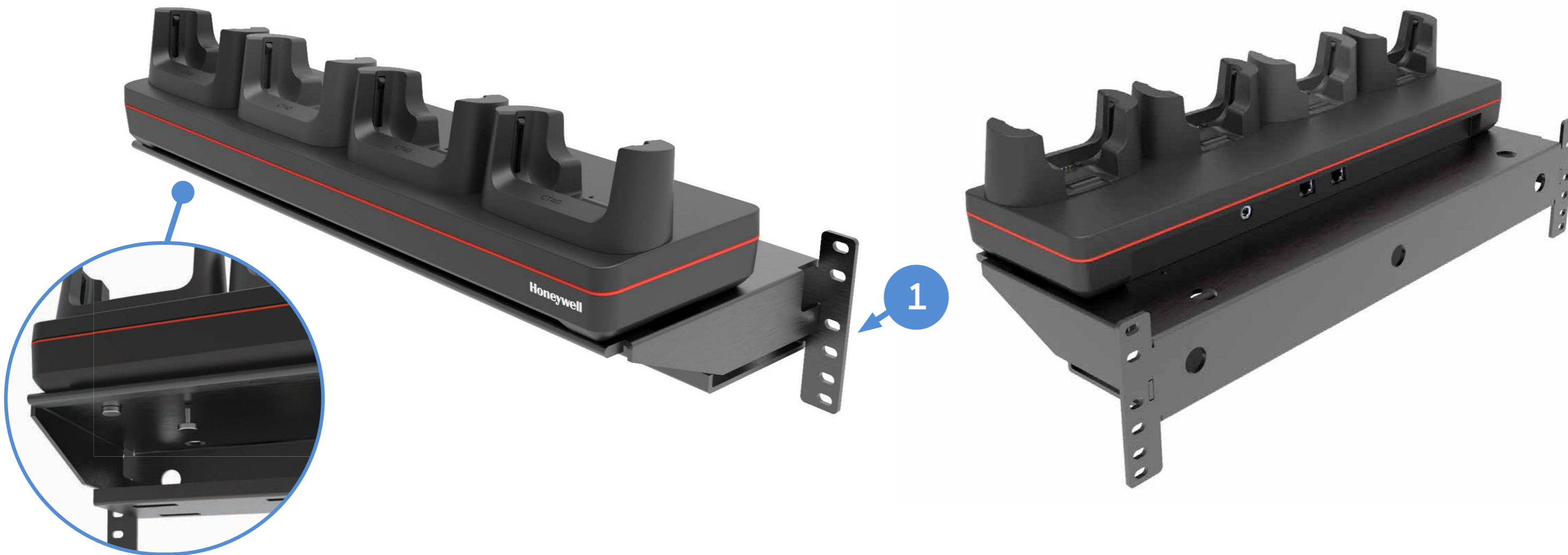
Batteries not included.

PART NUMBER	DESCRIPTION
1 CT4X-QBC-1BAY-0	1-Bay Quad Battery Charger - Kit includes Dock and Power Supply
2 **	Spare Battery - See Page 32 for Battery Selection
3 **	IEC C13 AC Power Cord - See Page 48 for Country Specific Power Cords

CT45 / CT45 XP CHARGING AND COMMUNICATION

Rack / Wall Mount Bracket

The Rack/Wall Mount Bracket has been optimized to work on a standard 19-inch (48cm) rack, as well as mounting directly onto a wall. Compatible with all 4-bay chargers.



Thumb Screws View



Front View



Rear View



Power Supply Shelf View



Bottom View

PART NUMBER	DESCRIPTION
1 CB-BK-01	4 Bay Charger Bracket, Rack / Wall Mount (includes 4 x 50180100-001 Thumb Screws M3.5x10 to securely attach the 4-bay dock to the bracket)

CT40 / CT40 XP / CT45 / CT45 XP BATTERY

Spare Battery Options



CT40 Gen 1
CT40-LxN-xxxxx0x

CT40 Gen 2
CT40-LON-xxxxxAx
CT40-L1N-xxxxxBx

CT40 XP
CT40P-LON-xxxxxAx
CT40P-L1N-xxxxxBx

CT45
CT45-xxx-xxxxxxx

CT45 XP
CT45P-xxx-xxxxxxx

CT40 Healthcare
CT40-LxN-xxxxxHx

CT40 XP Healthcare
CT40P-LxN-xxxxxHx

CT40 Disinfectant Ready
CT40-LxN-xxxxxDx

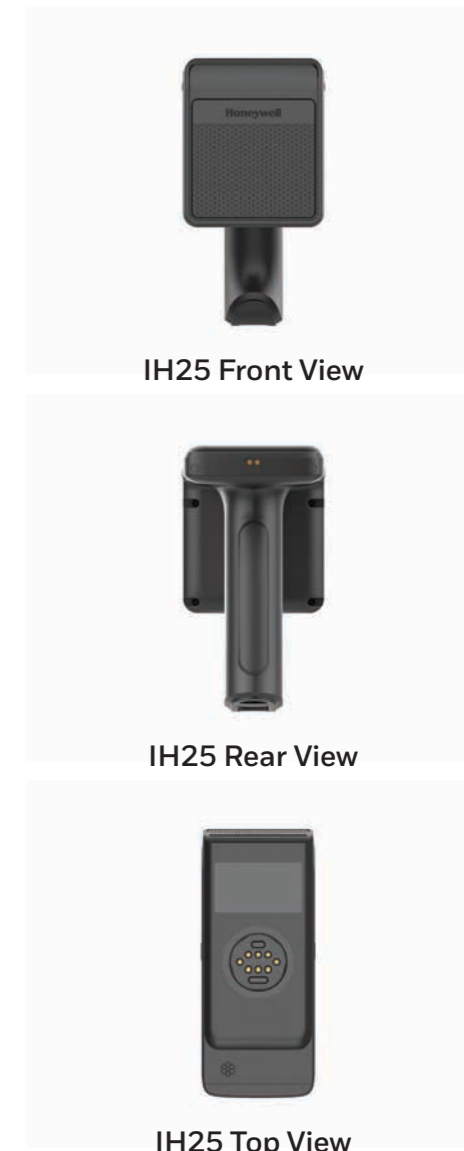
CT40 XP Disinfectant Ready
CT40P-LxN-xxxxxDx

PART NUMBER	DESCRIPTION
1	318-055-011 CT40 Gen 1 Battery Pack, 4040mAh, for use with CT40 configurations with plastic battery latch button
2	318-055-067 CT40 Gen 2 / XP, CT45 / XP Battery Pack, 4020mAh, for use with CT40 / CT45 configurations with metal battery latch button
3	318-055-H67 CT40 Healthcare / XP Battery Pack, 4020mAh, White cover, Healthcare
4	318-055-D67 CT40 Disinfectant Ready / XP Battery Pack, 4020mAh

CT45 / CT45 XP RFID

IH25 RFID Reader with CT45 / CT45 XP Non-Booted

Connect the IH25 to the CT45 via Bluetooth.



IH25 Front View

IH25 Rear View

IH25 Top View

	PART NUMBER	REGION	DESCRIPTION
1	IH25-0-N001S00UK	FCC / ANZ	IH25 High-Performance UHF RFID tag reader, US Frequency Range of RFID output (902-928MHz), Includes Battery
OR	IH25-0-N001S000K	ETSI	IH25 High-Performance UHF RFID tag reader, EU Frequency Range of RFID output (865-868 MHz), Includes Battery
OR	IH25-0-N001S00JK	JAPAN	IH25 High-Performance UHF RFID tag reader, Japan, US Frequency Range of RFID output (902-928MHz), Includes Battery
OR	IH25-0-N001S00KK	KOREA	IH25 High-Performance UHF RFID tag reader, Korea, US Frequency Range of RFID output (902-928MHz), Includes Battery
2	IH40-BK-45		CT45 Non-Booted RFID bracket for IH40 and IH25, hand strap compatible
3	50155100-001		IH25 Wrist Strap

Honeywell Repair Services

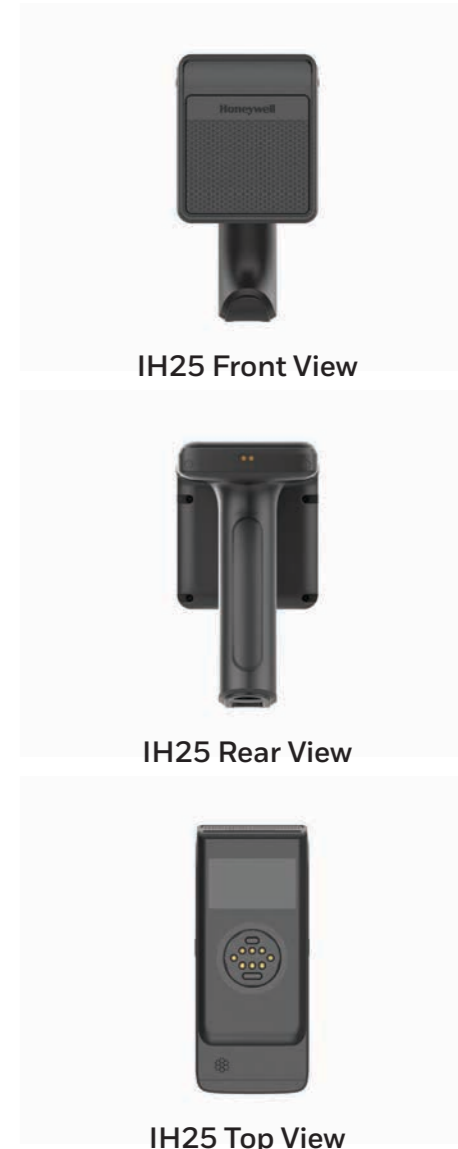
SVCIH25-SG3N

IH25, Edge Service, Gold Maintenance Contract, 3 Year, New Contract

CT45 / CT45 XP RFID

IH25 RFID Reader with CT45 / CT45 XP Booted

Connect the IH25 to the CT45 via Bluetooth.



	PART NUMBER	REGION	DESCRIPTION
1	IH25-0-N001S00UK	FCC / ANZ	IH25 High-Performance UHF RFID tag reader, US Frequency Range of RFID output (902-928MHz), Includes Battery
OR	IH25-0-N001S000K	ETSI	IH25 High-Performance UHF RFID tag reader, EU Frequency Range of RFID output (865-868 MHz), Includes Battery
OR	IH25-0-N001S00JK	JAPAN	IH25 High-Performance UHF RFID tag reader, Japan, US Frequency Range of RFID output (902-928MHz), Includes Battery
OR	IH25-0-N001S00KK	KOREA	IH25 High-Performance UHF RFID tag reader, Korea, US Frequency Range of RFID output (902-928MHz), Includes Battery
2	IH40-BK-45PB		CT45 Booted RFID bracket for IH40 and IH25, hand strap compatible
3	CT40-PB-XP		CT40 Protective Boot to charge CT40XP & general CT40 configurations.
4	50155100-001		IH25 Wrist Strap

Honeywell Repair Services

SVCIH25-SG3N

IH25, Edge Service, Gold Maintenance Contract, 3 Year, New Contract

CT45 / CT45 XP RFID

IH25 RFID Reader Charging Options

IH25 shares the same chargers as EDA50/ EDA51.



IH25 Home Base



IH25 Charge Base



IH25 Quad Battery Charger

PART NUMBER	DESCRIPTION
1 EDA51-HB-0	Charging cradle for charging ScanPal EDA50/EDA50hc/ EDA51 terminal and battery. Compatible with scan handle. No Power Cord. Also fit with IH25 for charging purposes
2 EDA50-CB-0	For recharging up to 4 computers. Kit includes Dock, Power Supply, No Power Cord.
3 EDA50-QBC-0	Kit IH25/IH40/EDA50/EDA70/EDA71 Quad Battery Charger. Kit includes Dock, Power Supply, No Power Cord.
**	IEC C13 AC Power Cord – See Page 48 for Country Specific Power Cords

CT45 / CT45 XP RFID

IH40 RFID Reader with CT45 / CT45 XP Non-Booted

Connect the IH40 to the CT45 via Bluetooth or USB.

IH40 has a user accessible replaceable battery.



IH40 Front View



IH40 Rear View



IH40 Top View

	PART NUMBER	REGION	DESCRIPTION
1	IH40-0-N001S02UK	FCC / ANZ	IH40 High-Performance UHF RFID tag reader, US Frequency Range of RFID output (902-928MHz), Includes Battery
OR	IH40-0-N001S02OK	ETSI	IH40 High-Performance UHF RFID tag reader, EU Frequency Range of RFID output (865-868 MHz), Includes Battery
2	IH40-BK-45		CT45 Non-Booted RFID bracket for IH40 and IH25, hand strap compatible
3	50155100-001		IH25 Wrist Strap

Honeywell Repair Services

SVCIH40-SG3N

IH40, Edge Service, Gold Maintenance Contract, 3 Year, New Contract

CT45 / CT45 XP RFID

IH40 RFID Reader with CT45 / CT45 XP Booted

Connect the IH40 to the CT45 via Bluetooth or USB.
IH40 has a user accessible replaceable battery.



IH40 Front View



IH40 Rear View



IH40 Top View

	PART NUMBER	REGION	DESCRIPTION
1	IH40-0-N001S02UK	FCC / ANZ	IH40 High-Performance UHF RFID tag reader, US Frequency Range of RFID output (902-928MHz), Includes Battery
OR	IH40-0-N001S02OK	ETSI	IH40 High-Performance UHF RFID tag reader, EU Frequency Range of RFID output (865-868 MHz), Includes Battery
2	IH40-BK-45PB		CT45 Booted RFID bracket for IH40 and IH25, hand strap compatible
3	CT45-PB-1		CT45 and CT45 XP Hard Protective Boot
4	50155100-001		IH25 Wrist Strap

Honeywell Repair Services

SVCIH40-SG3N

IH40, Edge Service, Gold Maintenance Contract, 3 Year, New Contract

CT45 / CT45 XP RFID

IH40 RFID Reader Charging Options

IH40 shares the same chargers as CT45 terminal charger and EDA50/ EDA51 battery charger.



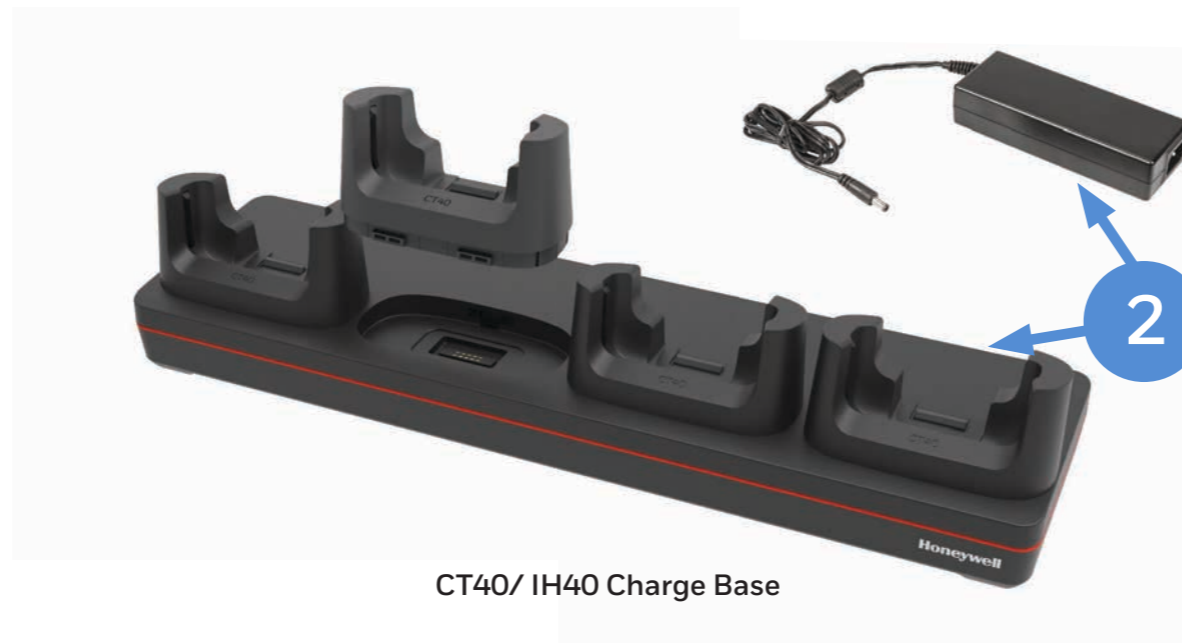
IH40-ADP-SLV
for use with Booted Docks



CT40/ IH40 Home Base



1



CT40/ IH40 Charge Base

2



3



IH40 Quad Battery Charger

	PART NUMBER	DESCRIPTION
1	CT40-HB-UVN-0	Non-Booted HomeBase - Kit includes (CT40-UCP-N), Dock & Power Supply, No Power Cord
OR	CT40-HB-UVB-0	Booted HomeBase - Kit includes (CT40-UCP-B), Dock & Power Supply, No Power Cord
	IH40-ADP-SLV	IH40 Adapter Sleeve for Booted CT40 cup (CT40-UCP-B)
2	CT40-CB-UVN-0	Non-Booted Chargebase - Kit includes Dock and Power Supply
OR	CT40-CB-UVB-0	Booted Chargebase - Kit includes Dock and Power Supply
	IH40-ADP-SLV	IH40 Adapter Sleeve for Booted CT40 cup (CT40-UCP-B) - Order 4 adapters per Charge Base
3	EDA50-QBC-0	Kit IH25/IH40/EDA50/EDA70/EDA71 Quad Battery Charger. Kit includes Dock, Power Supply, No Power Cord.

** IEC C13 AC Power Cord – See Page 48 for Country Specific Power Cords

CT45 / CT45 XP PROTECTIVE BOOT

Dockable Protective Boot

Use when protective boot is required with or without scan handle and dockable, compatible with handstrap installed.



PART NUMBER	DESCRIPTION
1 CT45-PB-1	CT45 and CT45 XP Hard Protective Boot

CT45 / CT45 XP HEADSET

Option 1 - 3.5mm CT45 Push To Talk (PTT) Headset

3.5mm audio PTT and VoIP ready to support In-Store Communication with leading 3rd party applications. Compatible with CT40-PB-00 / CT40-PB-XP installed.



PART NUMBER	DESCRIPTION
-------------	-------------

1	CT40-HDST-35MM CT40 Headset with PTT, 3.5mm audio jack
OPTIONAL 2	CT40-CVT-25MM 3.5mm plug to 2.5mm Socket Adaptor Cable (for attaching 3rd party 2.5mm headsets)

Option 2 - USB-C CT45 Push To Talk (PTT) Headset

USB-C audio PTT and VoIP ready to support In-Store Communication with leading 3rd party applications. Compatible with CT40-PB-00 / CT40-PB-XP installed.



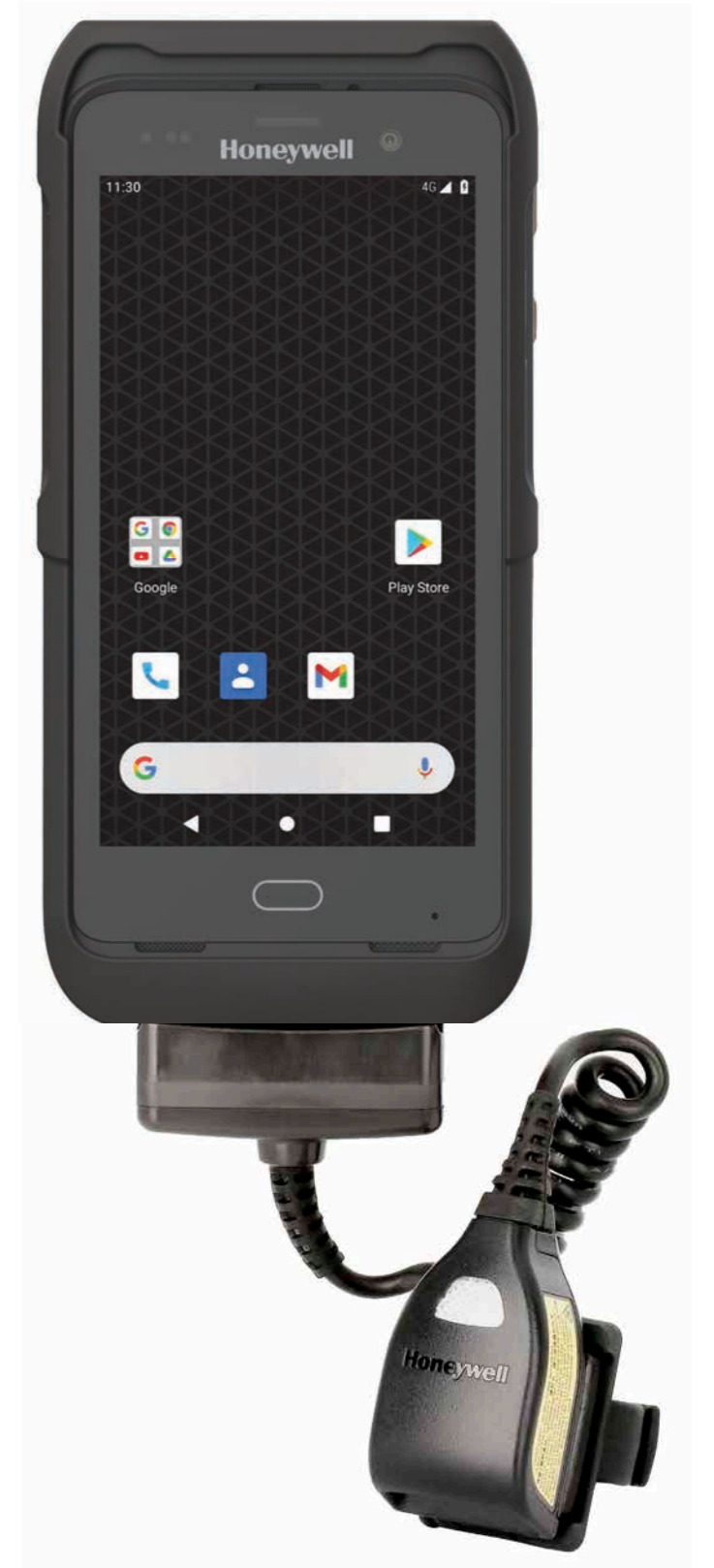
PART NUMBER	DESCRIPTION
-------------	-------------

1	MBL-HDST-USBC Headset with PTT, USB C
---	---------------------------------------

CT45 / CT45 XP WEARABLE

CT45 with Tethered Ring Scanner

Convert the CT45 into a Wearable Computer with Tethered Ring Scanner.



CT45 / CT45 XP WEARABLE WITH TETHERED RING SCANNER

Option 1 - CT45 Wearable with D75e Arm Band

Re-use existing D75e Arm Band (HWC-ARM BAND).



Option 2 - CT45 Wearable - Arm Band Wrist Pad

Arm Band with wrist pad.



PART NUMBER	DESCRIPTION
CT40-WS-KIT	CT40 WEARABLE SET, including Holder, tethered ring scanner and arm band CT40-WS-PB CT40 Holder with tethered ring scanner HWC-ARM BAND Arm Band, Wearable Computer (Order CT45-PB-1 Protective Boot separately)

PART NUMBER	DESCRIPTION
CT40-WS-00	CT40 WEARABLE SET, including Holder, tethered ring scanner and arm band. CT40-WS-PB CT40 Holder with tethered ring scanner CT40-WS-AB Arm Band Wrist Band (Order CT45-PB-1 Protective Boot separately)

See next page for exploded view of individual components.

CT45 / CT45 XP WEARABLE WITH TETHERED RING SCANNER

Option 1 - CT40 / CT45 Wearable with D75e Arm Band

Re-use existing D75e Arm Band (HWC-ARM BAND).



Large Ring Strap
(One included with CT40-WS-KIT)

Spares - 8600503SOFTSTRAP
20 pack ring finger straps
small soft rubber straps with snap-on mount.
Small Ring Strap
(One included with CT40-WS-KIT)

Spares - 8600504SOFTSTRAP
20 pack ring finger straps
large soft rubber straps with snap-on mount.

Option 2 - CT40 / CT45 Wearable - Arm Band Wrist Pad

Arm Band with wrist pad.



Large Ring Strap
(One included with CT40-WS-00)

Spares - 8600503SOFTSTRAP
20 pack ring finger straps
small soft rubber straps with snap-on mount.
Small Ring Strap
(One included with CT40-WS-00)

Spares - 8600504SOFTSTRAP
20 pack ring finger straps
large soft rubber straps with snap-on mount.

PART NUMBER	DESCRIPTION
1	CT45-PB-1 CT45 and CT45 XP Hard Protective Boot
2	CT40-WS-KIT CT40 WEARABLE SET, including Holder, tethered ring scanner and arm band. CT40-WS-PB CT40 Holder with tethered ring scanner HWC-ARM BAND Arm Band, Wearable Computer

Honeywell Repair Services

SVCWRSCT40-SG3N CT40 Wearable, Edge Service, Gold Maintenance Contract, 3 Year, New Contract

PART NUMBER	DESCRIPTION
1	CT45-PB-1 CT45 and CT45 XP Hard Protective Boot
2	CT40-WS-00 CT40 WEARABLE SET, including Holder, tethered ring scanner and arm band. CT40-WS-PB CT40 Holder with tethered ring scanner CT40-WS-AB Arm Band Wrist Band

Honeywell Repair Services

SVCWRSCT40-SG3N CT40 Wearable, Edge Service, Gold Maintenance Contract, 3 Year, New Contract

MISCELLANEOUS

Optional Parts



PART NUMBER	DESCRIPTION
CT40-HS-3PK	CT40 HAND STRAP, pack of 3

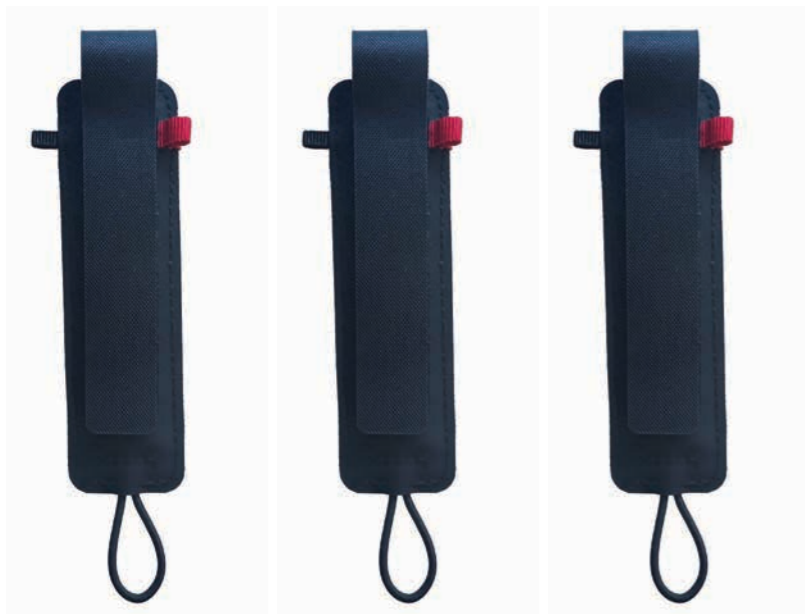


Note: Stylus is not to be used with screen protector

PART NUMBER	DESCRIPTION
213-048-001	Pack of 5 CT40 / CT50 / CT60 replacement styluses.
8754-871600-20	Pack of 10 CT40 / CT50 / CT60 replacement styluses.



PART NUMBER	DESCRIPTION
CT40-SP-1PK	Contains 1 self-adhesive screen protectors for CT40 with no front facing camera.



PART NUMBER	DESCRIPTION
CT45-HS-FM	CT45 HAND STRAP for Field Mobility 3 pieces per pack. Larger handstrap for field mobility workers with big hands or those who wear gloves. Compatible with Vehicle Docks.



PART NUMBER	DESCRIPTION
CT40-STL-1PKC	CT40 and CT45 Stylus for use with or without screen protectors. Pack of 1.



PART NUMBER	DESCRIPTION
CT45-SP-1PK	Contains 1 self-adhesive screen protector for CT40 XP and CT45/ CT45XP with front facing camera.

MISCELLANEOUS

Optional Parts

Replacement Power Supplies.



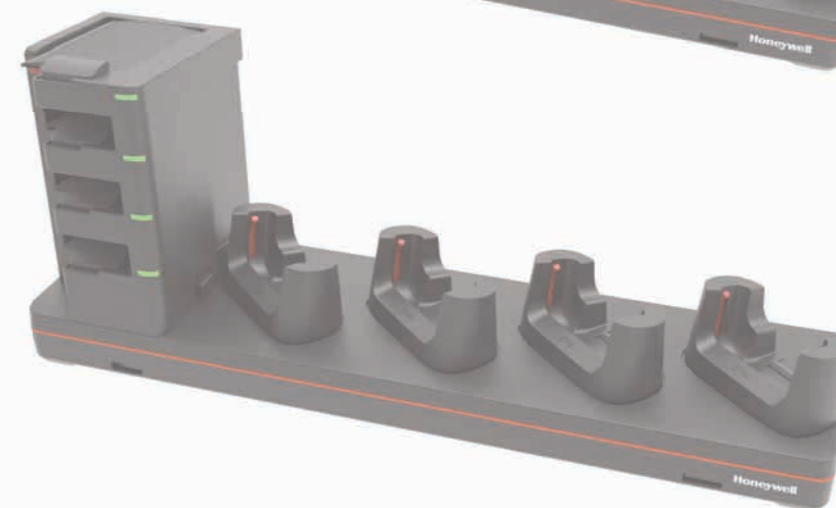
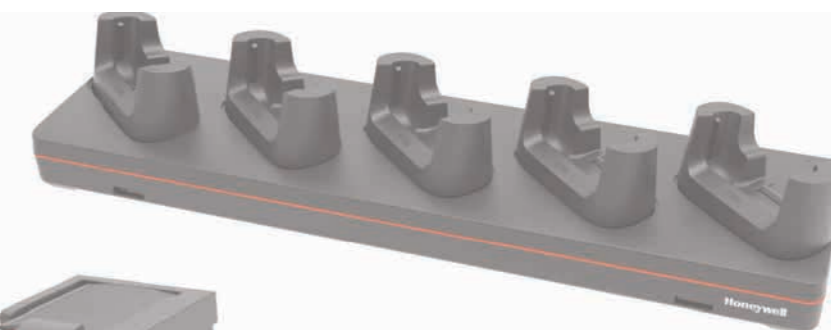
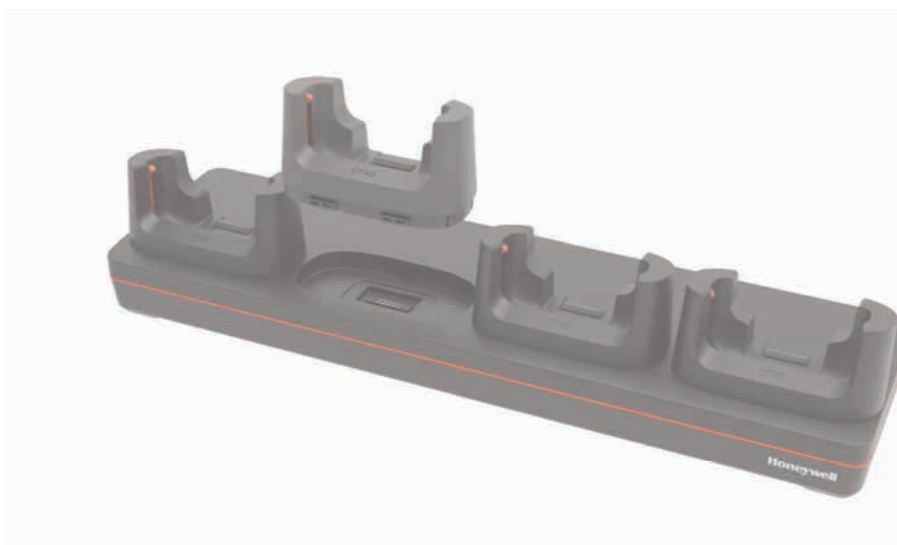
IEC C14



IEC C14



IEC C6



PART NUMBER DESCRIPTION

50121666-001 Power Adapter,12V 3A, No Power Cord, Compatible with CT40 Homebase / eHomebase / Quad Battery Charger (Requires IEC C13 AC Power Cord)

PART NUMBER DESCRIPTION

50121667-001 Power Adapter,12V 7A, No Power Cord, CT40 Quad Chargebase/ Quad Netbase (Requires IEC C13 AC Power Cord)

PART NUMBER DESCRIPTION

3007-3408-001 Power Supply 12V 8.3A R7B ADS-120QL-12-3 120100E 5-Bay Charge Base (Requires IEC C5 AC Power Cord)

MISCELLANEOUS

Optional Parts



PART NUMBER	DESCRIPTION
CT40-UCP-N	CT40 Non-Booted universal cup, to be used for CT40 without protective boot



PART NUMBER	DESCRIPTION
CT40-UCP-B	CT40 Booted universal cup, to be used for CT40 with protective boot (CT45-PB-1)



PART NUMBER	DESCRIPTION
CT45-VD-IST	CT45 Vehicle dock plastic insert, can be used along with CT40-VD-CNV and CT45-VD-CNV



Batteries not included.

PART NUMBER	DESCRIPTION
CT45-BAT-CUP	CT45/CT40 Universal Battery Cup Compatible CT45-5CB-UVN-BAT-0, CT45-5CB-UVB-BAT-0 and CT4X-QBC-1BAY-0

MISCELLANEOUS

Optional Parts



PART NUMBER DESCRIPTION

CT50-CC-12 CHARGING CABINET FOR CT40/CT50/CT60 with space to house 12 Computers and 12 Spare Batteries. Quad battery chargers (CT40-QBC-0) and Quad ChargeBase (CT40-CB-0)



PART NUMBER DESCRIPTION

CT40-QL-00 CT40 Quad Lock Case Mount CT40 to 3rd party RFID readers



PART NUMBER DESCRIPTION

825-237-001 POUCH, CT40/CT50/CT60/CT60 XP



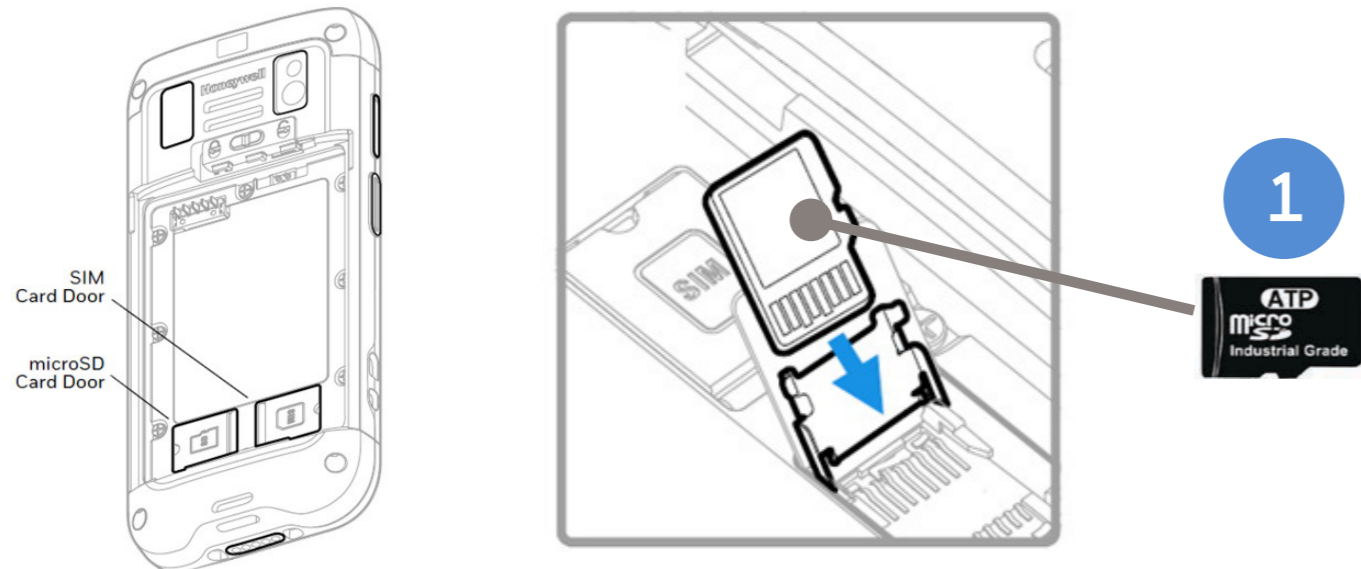
PART NUMBER DESCRIPTION

825-238-001 CT40/CT50/CT60/CT60 XP Holster

MISCELLANEOUS

Micro-SD Cards

Honeywell Recommended – ATP Industrial Grade Micro SD Cards



Why ATP Industrial Grade SD?

ATP's SIP (System-In-Packaging) manufacturing process encapsulates all exposed components and points of failure to ensure the products are fully waterproof, shockproof, and ESD (Electro-Static Discharge) proof. ATP Industrial Grade SD/SDHC Cards can withstand at least an operating/storage temperature range of at least -40 to 85 degrees Celsius. In addition to this temperature range, the cards are completely waterproof, dustproof, and ESD (Electro-Static Discharge) proof. All ATP Industrial Grade SD/SDHC cards are produced under a stringent RoHS and Green Package compliant manufacturing process to guarantee a consistent high level of build quality and performance. ATP Industrial SD cards deliver outstanding performance with read speed (seq) up to 18MB/sec and write speed (seq) up to 16MB/sec. All ATP Industrial Grade CF, SD, USB drives, and SSDs are constructed using best-in-class SLC(Single-Level Cell) components with enhanced Error Correction Code(ECC) functions and wear levelling algorithms. This results in MTBF ratings over 2 million hours and the highest write cycle lifetimes in the industry.

	PART NUMBER	DESCRIPTION
1	856-065-004	MICRO-SD CARD, 1GB , AFIGUDI, ROHS
OR	856-065-005	MICRO-SD CARD, 2GB , AFIGUDI, ROHS
OR	856-065-006	MICRO-SD CARD, 4GB , AFIGUDI, ROHS
OR	856-065-007	MICRO-SD CARD, 8GB , AFIGUDI, ROHS

AC Cords

Regional Power Cords



AC Power - C13 Type Connector

PART NUMBER	DESCRIPTION
50117501-001	POWER CORD AUSTRALIA 2500MM,SLED CB
321-501-002	AC Power Cord, Denmark RoHS
77900508E	Cable: power cord, power supply to AC outlet, straight, Power cord, Europe EU, IEC320-C13, 2.5 m (8.2 ft)
321-502-002	AC Power Cord, India/South Africa RoHS
321-500-002	AC Power Cord, Japan RoHS
9000093CABLE	AC POWER CABLE, C14 TYPE, SWITZERLAND 3-PIN
77900507E	Cable: power cord, power supply to AC outlet, straight - Power cord, UK, IEC320-C13, 2.5 m (8.2 ft)
1-974028-025	AC Power Cord, US RoHS



AC Power - C5 Type Connector

PART NUMBER	DESCRIPTION
3007-4681-001	C5 type power cable, USA
3007-4683-001	C5 type power cable, Europe
3007-4682-001	C5 type power cable, UK
3007-4684-001	C5 type power cable, Australia

MISCELLANEOUS

Disclaimer

Honeywell International Inc. (“HII”) reserves the right to make changes in specification and other information contained in this document without prior notice, and the reader should in all cases consult HII to determine whether any such changes have been made. The information in this publication does not represent a commitment on the part of HII.

HII shall not be liable for technical or editorial errors or omissions contained herein; nor for incidental or consequential damages resulting the furnishing, performance, or use of this material.

This document contains proprietary information that is protected by copyright. All rights are reserved. No part of this document may be photocopied, reproduced, or translated into another language with-out prior written consent of HII.

Web Address: www.honeywellaidc.com

The Bluetooth trademarks are owned by Bluetooth SIG, Inc., U.S.A and licensed to Honeywell.

Thor and Mobility Edge are trademarks or registered trademarks of Honeywell International Inc. in the United States and/or other countries.

Android is a trademark or registered trademark of Google Inc. in the United States and/or other countries. Windows is a trademark or registered trademark of Microsoft Corporation.

Qualcomm and Snapdragon are trademarks or registered trademarks of Qualcomm Incorporated in the United States and/or other countries.

Other product names mentioned in the manual may be trademarks of registered trademarks of their respective companies and are the property of their respective owners.

All rights reserved.

For more information

sps.honeywell.com

Honeywell Safety and Productivity Solutions

300 S Tryon St Suite 500
Charlotte, NC 28202
800-582-4263
www.honeywell.com